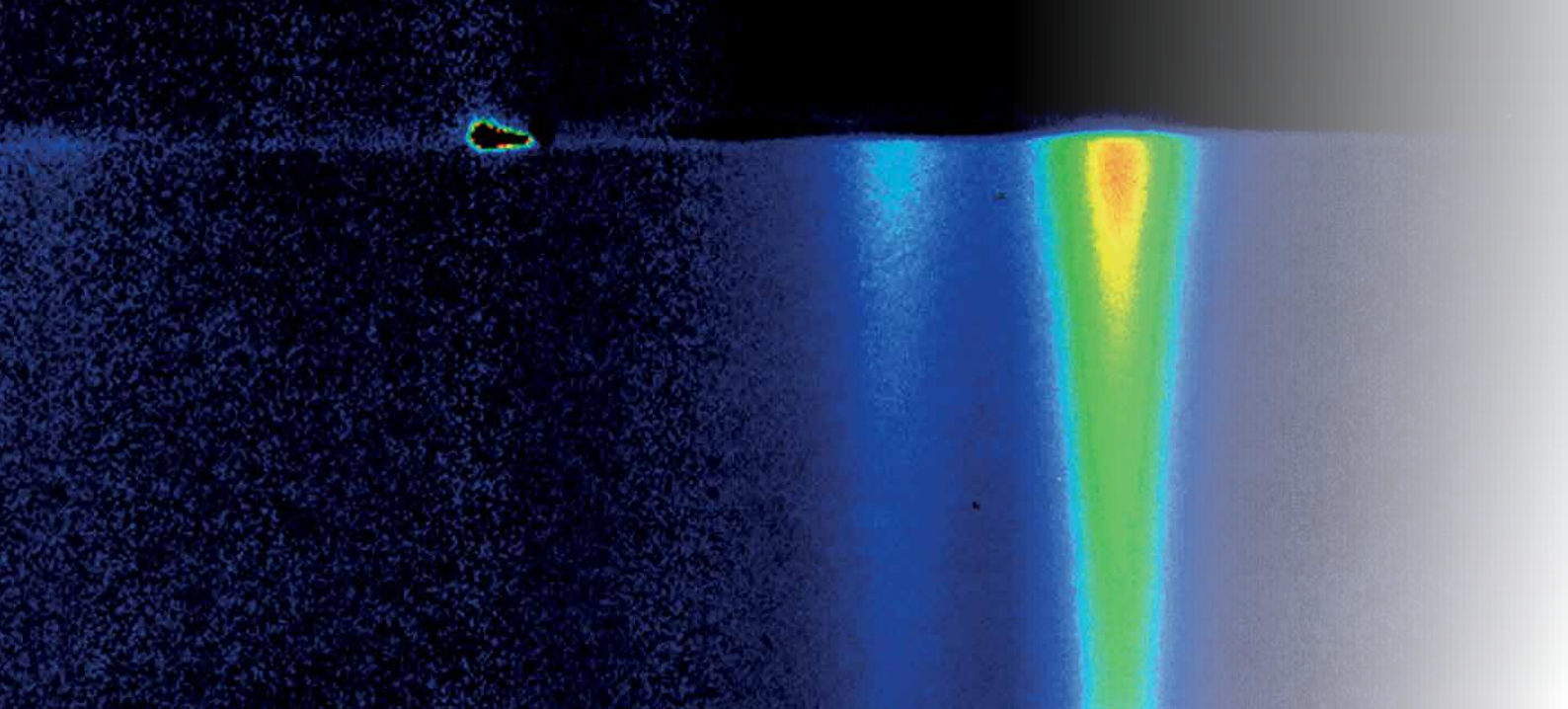


HPD – TA

High-Performance Digital Temporal Analyzer

HAMAMATSU
PHOTON IS OUR BUSINESS



Hamamatsu Photonics is a leading manufacturer of optoelectronic detectors, light sources and systems. These include photomultipliers, photodiodes, infrared detectors, highly sensitive cameras, laser diodes, discharge lamps, X-ray detectors and sources as well as special systems for semiconductor manufacturing, pharmaceutical development, non-destructive testing and academic research.

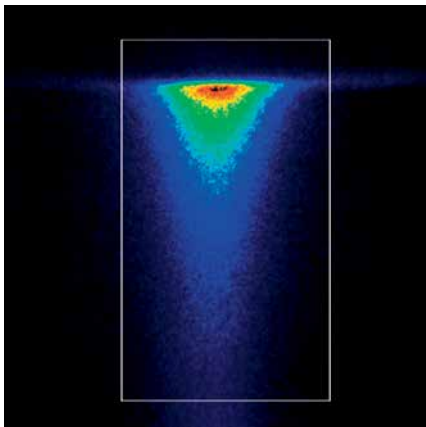
Hamamatsu Photonics is dedicated to improve life through photonic technologies. Based on this corporate philosophy, we continuously develop new product for scientific, industrial and commercial applications. Hamamatsu Photonics is one of the innovation leaders in photonics worldwide. We support our customers through a global network of subsidiaries.

TABLE OF CONTENT	PAGE
Overview	4
Supported hardware	4
Data acquisition	5
Image display	6
Intensity profiles	6
Data correction	7
Data calibration	8
Data export	8
Remote control, automation & customization	8
Application-specific modules (optional)	9
Typical workspace	10
Hamamatsu Photonics K.K. Sales Offices	11

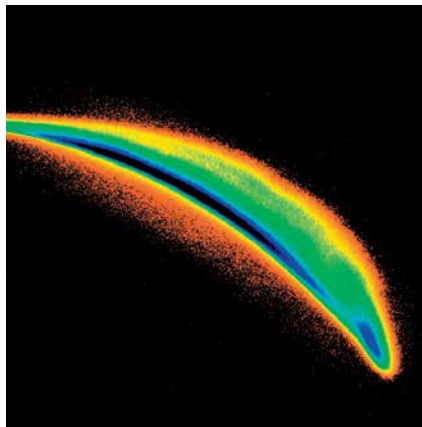
Software for streak camera systems, U13313

- Control of complete streak systems
- Powerful data acquisition
- Full data calibration
- Manual and automated operation

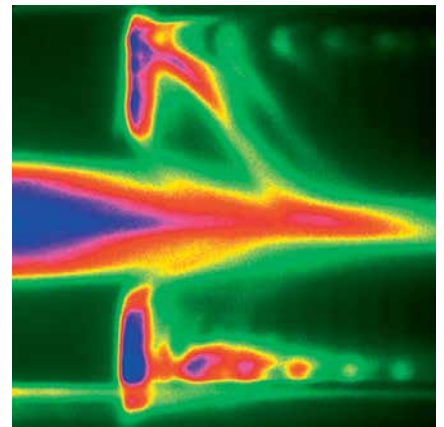
Fluorescence spectroscopy



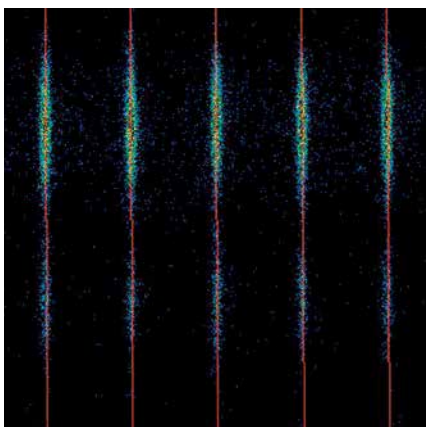
Laser physics



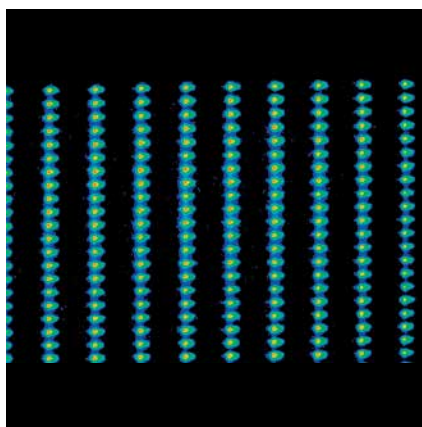
Plasma physics



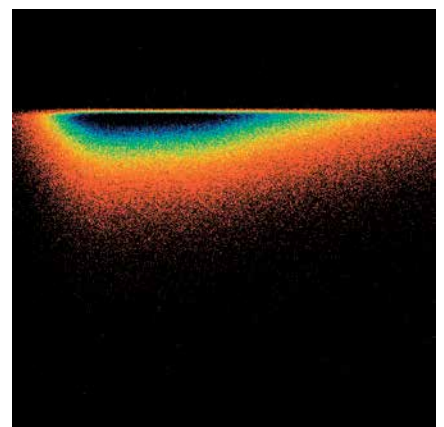
Photon correlation



Synchrotron monitoring



X-ray excited luminescence



Overview

The HPD-TA Temporal Analyzer software is a high-performance control & imaging software, designed specifically for controlling streak systems and performing streak measurements in a wide variety of application fields. It provides precise data acquisition and pre-processing of two-dimensional streak data, including a full range of data correction and calibration possibilities.

It integrates the various hardware devices belonging to a complete streak measurement setup into a single coherent system by controlling all system components and their interrelations.

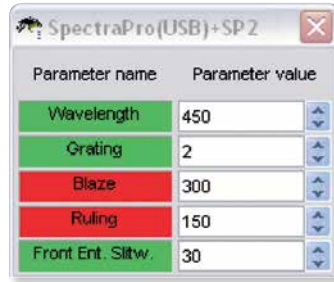
The HPD-TA software runs on current 64-bit Microsoft Windows platforms. It offers plenty of features based on our long-term experience and feedback from users all over the world.



Streak camera control



Delay control



Spectrograph control

The device support function allows us to add new devices easily.

Standardized control panels facilitate controlling the hardware as well as displaying the current device status.

The examples above show the control panels of a streak camera, a spectrograph and a delay generator.

Supported hardware

Streak cameras	HPD-TA fully supports all old and new Hamamatsu streak cameras models. Several safety functions help to prevent overstressing the streak tube in case of user mistakes. In this way, HPD-TA brings not only convenience but also safety to your valuable system.
Readout cameras	For reading out the phosphor screen of the streak tubes HPD-TA supports our Hamamatsu digital cameras.
Accessory devices	HPD-TA can also control a variety of external devices such as spectrographs, pulse generators, delay generators, trigger units, shutters, and more. (For a detailed list of currently supported devices, please consult Hamamatsu.)

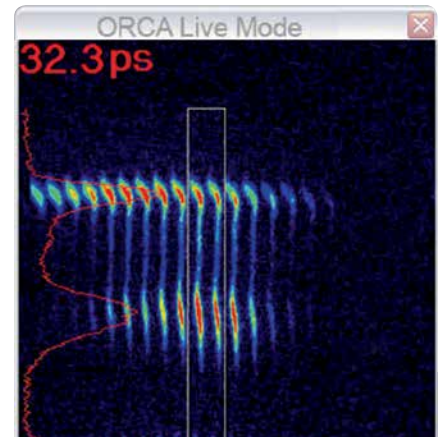
This versatility allows enrolling all these devices into a single coherent measuring system, convenient and safe to use. Streak measurements have never been easier.

Data acquisition

Live imaging

Live Mode allows viewing the streak image on the PC monitor in real-time. It is mainly used for monitoring the light signal during jobs such as optical alignment, focusing, laser adjustment, and so on.

The example picture shows the time-resolved spectrum of a pulsed laser diode in real-time.



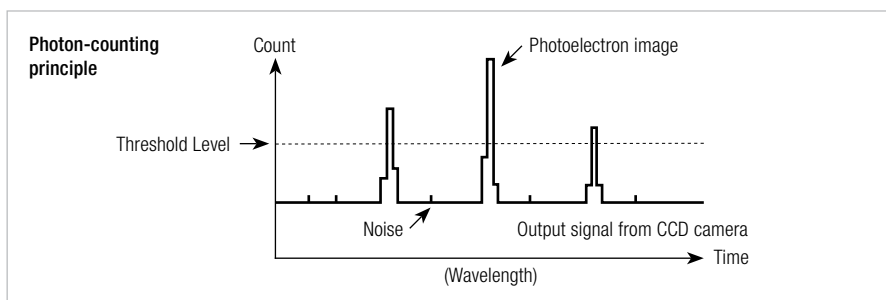
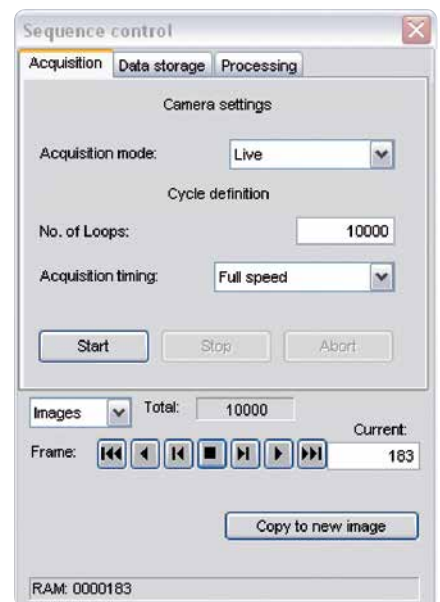
Event synchronization

In case of single-sweep streak setups the image grabbing must typically be synchronized with the streak camera and external events. HPD-TA supports versatile trigger schemes facilitating this task, including handshake signaling with the streak camera in order to control trigger inhibition and to prevent accidental misfiring.

Ultra-sensitive data acquisition

The measurement of very weak signals frequently requires longer integration times. HPD-TA offers a wide variety of integration modes, including on-chip integration and in-memory accumulation. By these methods, integration times ranging from a few ms to several hours can be realized.

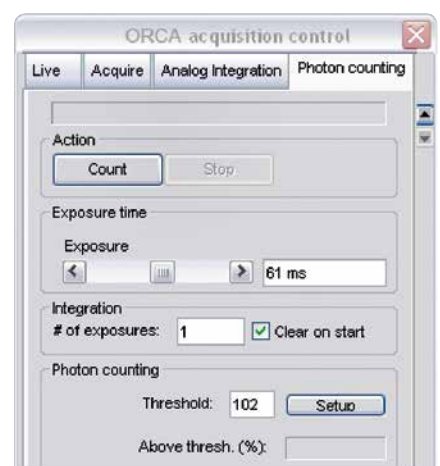
If ultimate sensitivity or dynamic range is required, the user can choose *Photon-Counting Mode*. This yields near-Poissonian counting statistics, and the obtainable D-range has basically no upper limit. All kinds of data integrations are performed in real-time, without skipping any signal.



Recording dynamic phenomena

For the purpose of recording slow variations of streak data over time, HPD-TA offers two dedicated tools. *Sequence Mode* streams images or intensity profiles continuously into RAM or onto the hard disk in real-time. After recording, such sequences can be played back like a movie, and various image processing functions can be applied to the sequence at once, including averaging and jitter correction.

Dynamic Photon Counting records only the X-Y coordinates of photons. This allows extremely long data integration with a minimum of data size while preserving the exact coordinates of each registered photon. For example, the change of a time-resolved picosecond photon-counting spectrum due to slow sample kinetics can be analyzed. Also, post-selection of data ranges is possible without the need to repeat a whole long measurement from scratch.



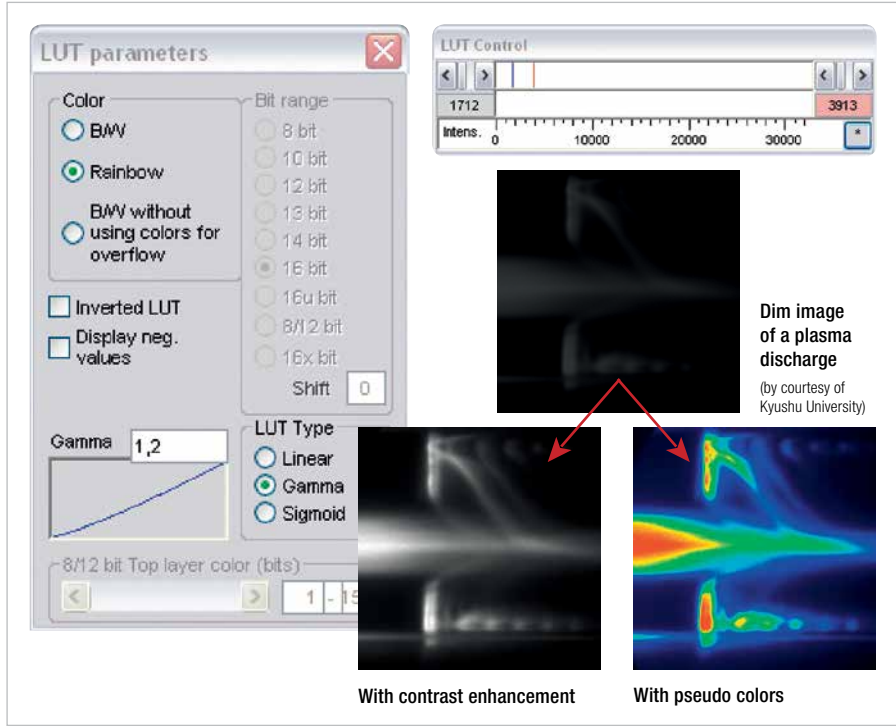
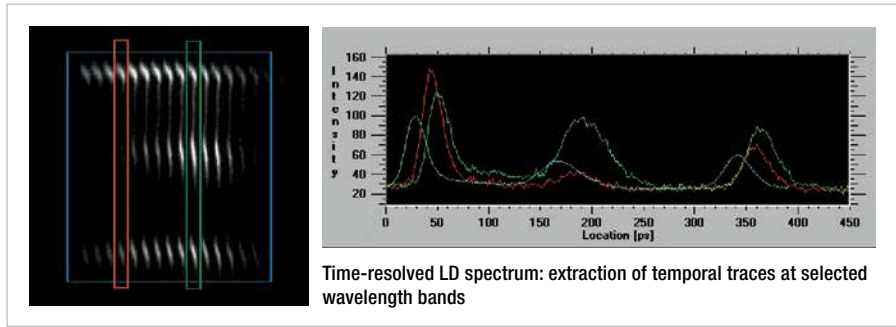


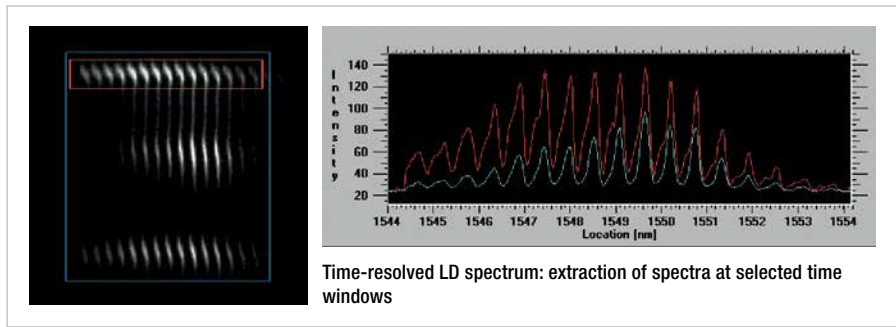
Image display

Frequently, images are very faint due to very low signal levels, which makes them difficult to inspect visually. The look-up-table (LUT) tool provides easy control over the image appearance by adjusting brightness, contrast and pseudo-colors, without affecting any measurement data. By this means even the dimmest phenomena can be visualized clearly and brightly. Image zoom & scroll allow inspecting tiny details when desired.

All these features work in real-time and in all acquisition modes including Live mode.



Vertical profile windows yield the temporal intensity traces. The red and green trace are the profiles of only one laser diode mode respectively, while the blue trace sums over all wavelengths.



The red trace shows the spectrum of the leading pulse only (equivalent to gated spectroscopy with a gate time of only a few ps), while the blue trace sums over the whole time span (equivalent to steady-state spectroscopy).

Intensity profiles

After acquiring a streak image you will usually want to extract intensity profiles along the time axis or the orthogonal axis. These profiles are created by integration inside of regions of interest (ROIs).

HPD-TA can handle several such profiles simultaneously, displayed in different colors. Simple analytical parameters like peak, rise/fall time, FWHM and others can be obtained on the fly.

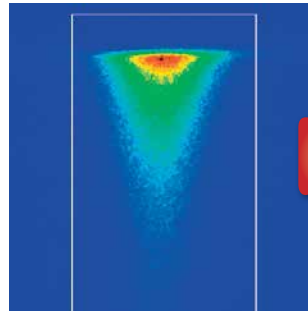
Examples on the left show how two different kinds of results can be extracted from one single streak image. The image is the same as that on page 3 under Live Mode, but now it has been frozen in memory.

Data correction

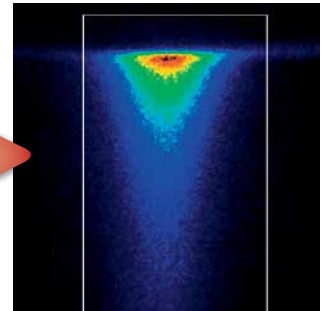
HPD-TA offers a full range of data correction and pre-processing functions. These are used to eliminate data artifacts caused by the characteristics of the experimental setup and measuring apparatus.

Background correction

Background correction is a subtractive correction eliminating offset signal caused by camera dark current or any other unwanted background signal such as stray light.



Time-resolved fluorescence spectrum

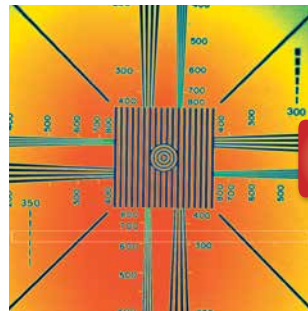


After background subtraction

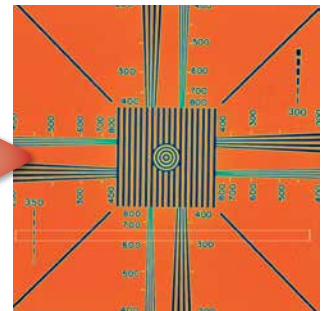
Shading correction

Shading correction is a multiplicative correction compensating for overall system non-uniformities such as those caused by photocathode shading or imperfect optical components in the measurement system.

A sub-case is spectral sensitivity correction, which is used in time-resolved spectroscopy and compensates for the wavelength-dependent efficiency of the spectrograph and detector.



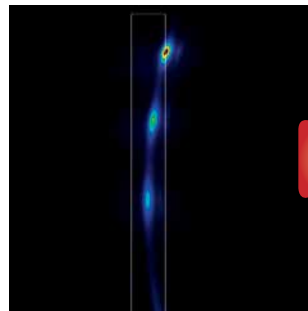
TV test pattern



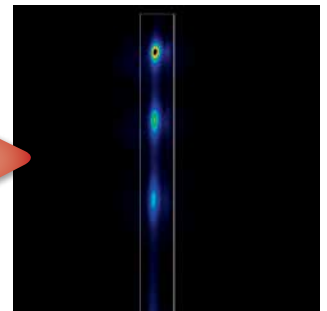
After shading correction

Curvature correction

Curvature correction performs a geometric image correction. Its main use is in combination with synchronous blanking, a special mode of synchroscan operation, which is causing an elliptical distortion of the streak image. Curvature correction allows you to rectify such images.



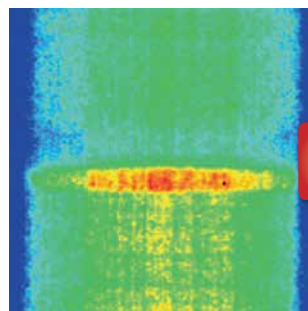
Oscillating laser diode



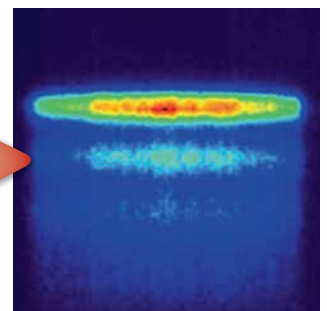
After curvature correction

Jitter correction

In some cases, especially repetitive single-shot operation, simple data accumulation sometimes does not give satisfying results due to timing jitter between subsequent data records. The Jitter corrector can automatically determine individual timing shifts for each data record prior to accumulation, thereby eliminating signal broadening. Jitter correction is used in combination with the sequence functionality.



Oscillating LD, integration with large jitter



After jitter correction

Major data formats:

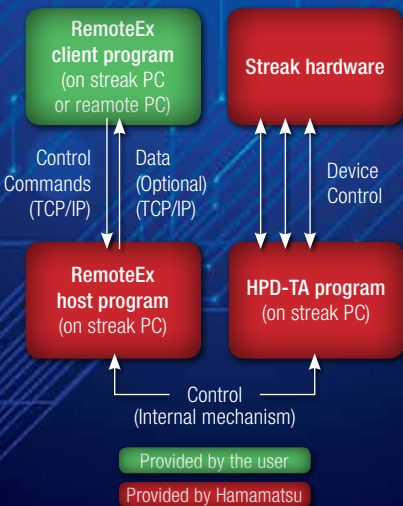
2-D data (images):

- IMG format (HPD-TA default format, up to 32 bits/pixel)
- TIFF format (mainly for presentation, publishing, printing)
- ASCII format (for easy import into data analysis software, spreadsheets, etc.)
- Two different image sequence formats (IMG file collection; HIS container)

1-D data (profiles):

- ASCII format, 2-columns (for easy import into data analysis software, spreadsheets, etc.)

All data formats are fully documented in the extensive user manual.



RemoteEx and LabVIEW SDK are well documented by extensive user manuals.

Data calibration

HPD-TA automatically attaches calibration information to all measurement data. Both image axes can be calibrated, the time axis and the orthogonal axis (which may be a wavelength axis if the streak camera is used in conjunction with a spectrograph).

Usually, the time calibration of a streak system is predefined by the factory, but the user can define new calibrations easily if he wants. After setup, all calibration handling by the system is fully automatic and does not require any special attention by the user.

Data export

Frequently, users wish to access measurement data by external software for special analysis or display purposes. Hamamatsu has been careful to make such tasks as easy as possible. HPD-TA supports popular file formats for images and profiles.

Remote control, automation & customization

In some cases it is desired to control the streak system by a user-written program or from a remote computer in the LAN. For instance, you may want to integrate the streak system into a bigger lab measurement scheme, or you may wish to create your own customized control software for special purposes. Also in some cases, the streak system may be physically inaccessible due to hazardous local environment, and so needs to be completely remotely controlled.

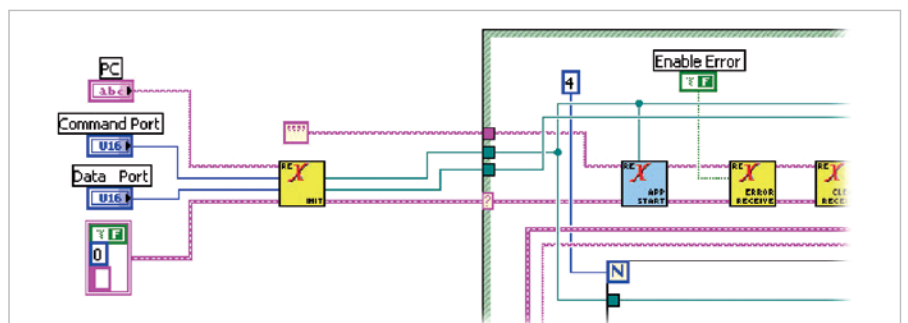
RemoteEx

The remote-control scheme called “RemoteEx” is the solution for all such cases. It works in a very simple manner by sending ASCII text commands to the streak system via TCP/IP, either from the streak PC itself or from any other computer on the LAN. These commands act on a high level, so you don’t need any detailed knowledge of the interiors of the involved hardware. This also ensures that some convenient automatic functions of the HPD-TA software are still active, which makes your own control code easy and safe.

Measurement data (profiles and images) can be transmitted as well. There are no restrictions on the programming language you use to write your control code, and it may run on any computer platform and operation system. The only requirement is that TCP/IP is available.

LabVIEW SDK

If you prefer to use LabVIEW for your automation tasks we offer a complete “vi” framework, ready to use. Sample LabVIEW programs are included.



Application-specific modules (optional)

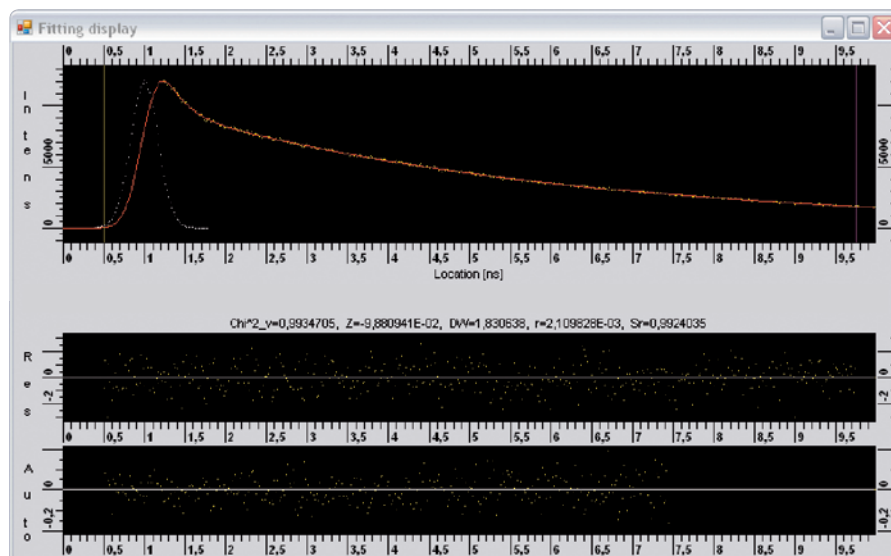
Some application-specific add-on modules for the HPD-TA software are available as options. They are seamlessly integrated into the HPD-TA and can be used without leaving the main program.

TA-Fit: Module for fluorescence lifetime data fitting

This is a tool for quantitative analysis of the intensity profiles from fluorescence decay emissions.

Features

- Fitting engine with adaptive least-square fitting algorithm
- Optional deconvolution with excitation pulse
- Determination of multiple lifetime components
- Quality of fit control via residuals, chi-square, autocorrelation
- Easy tweaking of fit parameters
- User-defined fitting sets for quick access to previously used settings



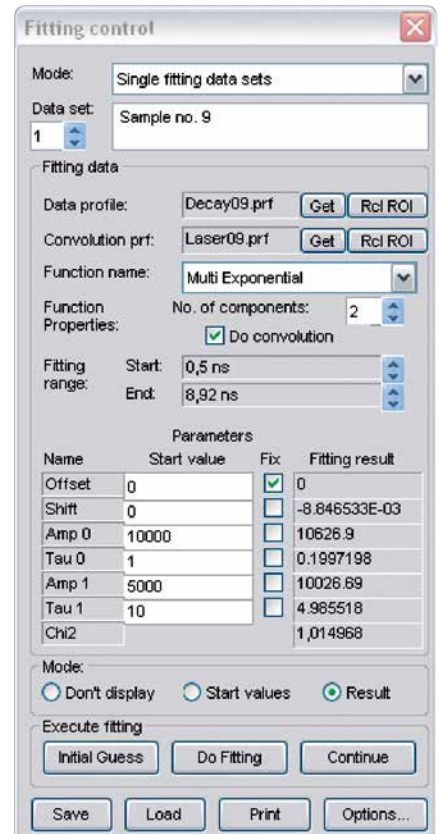
Fitting display window

Data fitting is a job that usually requires some level of training. Our extensive user manual not only explains the practical usage of the software, but also illuminates the theoretical background and contains a step-by-step tutorial.

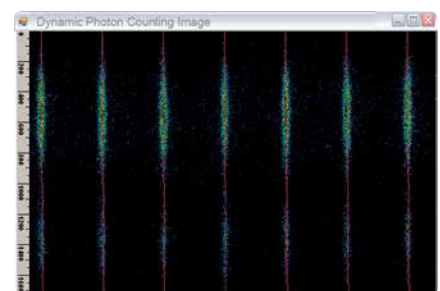
TA-Correlation: Tool for photon correlation measurements

This is a module for users who use their streak system for recording photon correlation data, an important subject in quantum optics and nanosciences. Advantages of the streak method are the very high temporal resolution, no obstruction from detector dead times, and the possibility to calculate also correlation functions of higher orders.

This module is using Dynamic Photon Counting to record the coordinates of each single photon, and makes these data accessible to the user's own analysis in a very easy way.



Fitting control window



Photon correlation measurement

Typical workspace



Hamamatsu Photonics K.K. Sales Offices

Japan:

HAMAMATSU PHOTONICS K.K.

325-6, Sunayama-cho, Naka-ku,
Hamamatsu City, Shizuoka Pref. 430-8587, Japan
Telephone: (81)53-452-2141, Fax: (81)53-456-7889
E-mail: intl-div@hq.hpkk.co.jp

China:

HAMAMATSU PHOTONICS (CHINA) Co., Ltd.

Main Office

1201 Tower B, Jianning Center, 27 Dongsanhuan Beilu,
Chaoyang District, 100020 Beijing, P.R. China
Telephone: (86)10-6586-6006, Fax: (86)10-6586-2866
E-mail: hpc@hamamatsu.com.cn

Shanghai Branch

4905 Wheelock Square, 1717 Nanjing Road West,
Jingan District, 200040 Shanghai, P.R. China
Telephone: (86)21-6089-7018, Fax: (86)21-6089-7017

Shenzhen Branch

14F China Merchants Tower 1#, No. 1166 Wanghai Road,
Shekou, Nanshan district, Shenzhen, P.R. China
Telephone: (86)755-2165-9058, Fax: (86)755-2165-9056
E-mail: hpcsz@hamamatsu.com.cn

Taiwan:

HAMAMATSU PHOTONICS TAIWAN Co., Ltd.

Main Office

8F-3, No.158, Section 2, Gongdao 5th Road,
East District, Hsinchu, 300, Taiwan R.O.C.
Telephone: (886)3-659-0080, Fax: (886)3-659-0081
E-mail: info@hamamatsu.com.tw

U.S.A.:

HAMAMATSU CORPORATION

Main Office

360 Foothill Road, Bridgewater, NJ 08807, U.S.A.
Telephone: (1)908-231-0960, Fax: (1)908-231-1218
E-mail: usa@hamamatsu.com

California Office

2875 Moorpark Ave., San Jose, CA 95128, U.S.A.
Telephone: (1)408-261-2022, Fax: (1)408-261-2522
E-mail: usa@hamamatsu.com

Germany, The Netherlands, Poland, Denmark, Israel:

HAMAMATSU PHOTONICS DEUTSCHLAND GmbH

Main Office

Arzbergerstr. 10, D-82211 Herrsching am Ammersee, Germany
Telephone: (49)8152-375-0, Fax: (49)8152-265-8
E-mail: info@hamamatsu.de

Netherlands Office

Transistorstraat 7, NL-1322 CJ Almere, The Netherlands
Telephone: (31)36-5405384, Fax: (31)36-5244948
E-mail: info@hamamatsu.nl

Poland Office

10 Ciolka Street, RN 126-127 01-402 Warsaw, Poland
Telephone: (48)22-646-0016, Fax: (48)22-646-0018
E-mail: poland@hamamatsu.de

Danish Office

Lautruphøj 1-3, DK-2750 Ballerup, Denmark
Telephone: (45)70 20 93 69, Fax: (45)44 20 99 10
Email: info@hamamatsu.dk

Israel Office (Hamamatsu Photonics Israel Ltd.)

Ha-Menofim 10 st., third floor, 4672561 Herzliya, Israel
E-mail: info@hamamatsu.co.il

France, Switzerland, Belgium, Spain:

HAMAMATSU PHOTONICS FRANCE S.A.R.L.

Main Office

19, Rue du Saule Trapu, Parc du Moulin de Massy,
91882 Massy Cedex, France
Telephone: (33)1 69 53 71 00, Fax: (33)1 69 53 71 10
E-mail: infos@hamamatsu.fr

Swiss Office

Dornacherplatz 7, 4500 Solothurn, Switzerland
Telephone: (41)32-625-60-60, Fax: (41)32-625-60-61
E-mail: swiss@hamamatsu.ch

Belgian Office

Axisparc Technology, Rue Andre Dumont 7
1435 Mont-Saint-Guibert, Belgium
Telephone: (32)10 45 63 34, Fax: (32)10 45 63 67
E-mail: info@hamamatsu.be

Spanish Office

C. Argenters, 4 edif 2 Parque Tecnológico del Vallés
08290 Cerdanyola (Barcelona), Spain
Telephone: (34)93 582 44 30, Fax: (34)93 582 44 31
E-mail: infospain@hamamatsu.es

North Europe and CIS:

HAMAMATSU PHOTONICS NORDEN AB

Main Office

Torshamnsgatan 35 16440 Kista, Sweden
Telephone: (46)8-509 031 00, Fax: (46)8-509 031 01
E-mail: info@hamamatsu.se

Russian Office

11, Christoprudny Boulevard, Building 1, Office 114,
101000, Moscow, Russia
Telephone: (7)495 258 85 18, Fax: (7)495 258 85 19
E-mail: info@hamamatsu.ru

Italy:

HAMAMATSU PHOTONICS ITALIA S.r.l.

Main Office

Strada della Moia, 1 int. 6, 20044 Arese (Milano), Italy
Telephone: (39)02-93 58 17 33, Fax: (39)02-93 58 17 41
E-mail: info@hamamatsu.it

Rome Office

Viale Cesare Pavese, 435, 00144 Roma, Italy
Telephone: (39)06-50 51 34 54
E-mail: inforoma@hamamatsu.it

United Kingdom:

HAMAMATSU PHOTONICS UK Limited

Main Office

2 Howard Court, 10 Tewin Road, Welwyn Garden City,
Hertfordshire AL7 1BW, UK
Telephone: (44)1707-294888, Fax: (44)1707-325777
E-mail: info@hamamatsu.co.uk

South Africa Contact:

9 Beukes Avenue, Highway Gardens, Edenvale
1609 South Africa
Telephone/Fax: (27)11-609-0367

Product and software package names noted in this documentation are trademarks or registered trademarks of their respective manufacturers. Windows is a trademark of Microsoft Corporation. LabVIEW is a trademark of National Instruments Corporation.

■ Subject to local technical requirements and regulations, availability of products included in this promotional material may vary. Please consult your local sales representative.

■ Information furnished by HAMAMATSU is believed to be reliable. However, no responsibility is assumed for possible inaccuracies or omissions. Specifications and external appearance are subject to change without notice.

©2021 Hamamatsu Photonics K.K.

MORE INSIGHTS
MORE APPLICATIONS
MORE PRODUCTS
www.hamamatsu.com

HAMAMATSU
PHOTON IS OUR BUSINESS

www.hamamatsu.com
europe@hamamatsu.de

Cat. No. SHSS0020E02
JUN/2021 HPD
Created in Germany