

FEATURES

- Large effective area: $\phi 70$ mm
- High collection efficiency

APPLICATIONS

- Scintillation counting



GENERAL

Parameter		Description	Unit
Spectral response		300 to 650	nm
Wavelength of maximum response		420	nm
Window material		Borosilicate glass	—
Photocathode	Material	Bialkali	—
	Minimum effective area	$\phi 70$	mm
Dynode	Structure	Box-and-grid	—
	Number of stages	10	—
Suitable socket		E678-14W (sold separately)	—
Operating ambient temperature		-30 to +50	°C
Storage temperature		-30 to +50	°C

MAXIMUM RATINGS (Absolute maximum values)

Parameter		Value	Unit
Supply voltage	Between anode and cathode	1500	V
Average anode current		0.1	mA

CHARACTERISTICS (at 25 °C)

Parameter		Min.	Typ.	Max.	Unit
Cathode sensitivity	Luminous (2856 K)	80	110	—	$\mu\text{A}/\text{lm}$
	Radiant at 420 nm	—	95	—	mA/W
	Blue sensitivity index (CS 5-58)	10	11.5	—	—
Anode sensitivity	Luminous (2856 K)	10	90	—	A/lm
	Radiant at 420 nm	—	7.8×10^4	—	A/W
Gain		—	8.2×10^5	—	—
Anode dark current (after 30 minute storage in darkness)		—	2	20	nA
Time response	Anode pulse rise time	—	18.5	—	ns
	Electron transit time	—	85	—	ns
Pulse linearity	at 2 % deviation	—	1.0	—	mA
	at 5 % deviation	—	5.0	—	mA

NOTE: Anode characteristics are measured with the voltage distribution ratio shown below.

VOLTAGE DISTRIBUTION RATIO AND SUPPLY VOLTAGE

Electrodes	K	G	Dy1	Dy2	Dy3	Dy4	Dy5	Dy6	Dy7	Dy8	Dy9	Dy10	P
Ratio	1	1	1	1	1	1	1	1	1	1	1	1	1

Supply voltage: 1000 V, K: Cathode, Dy: Dynode, P: Anode, G: Grid

PHOTOMULTIPLIER TUBE R12772

Figure 1: Typical spectral response

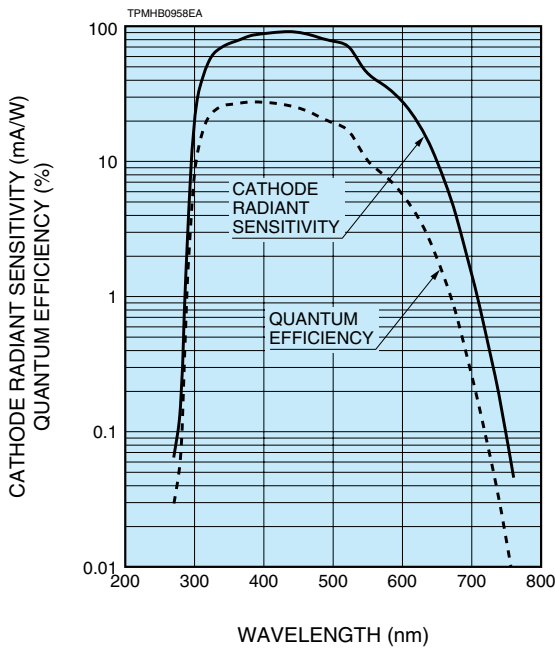


Figure 2: Typical gain

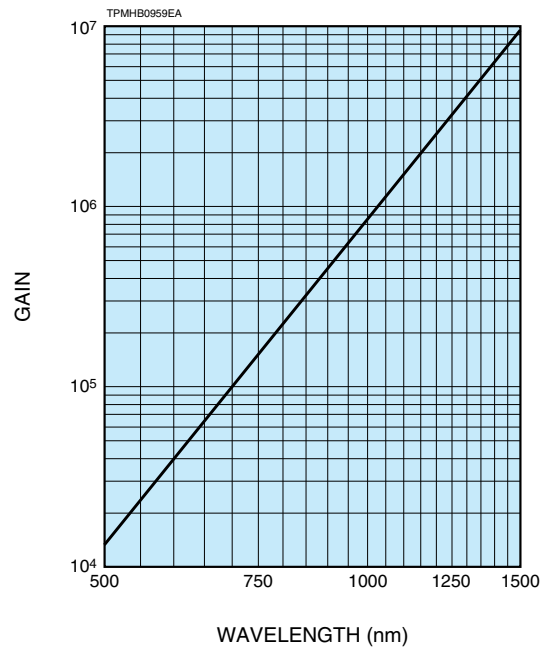
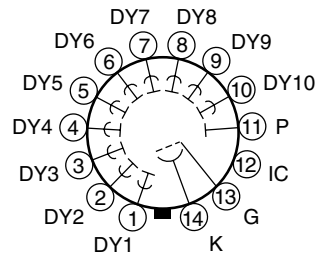
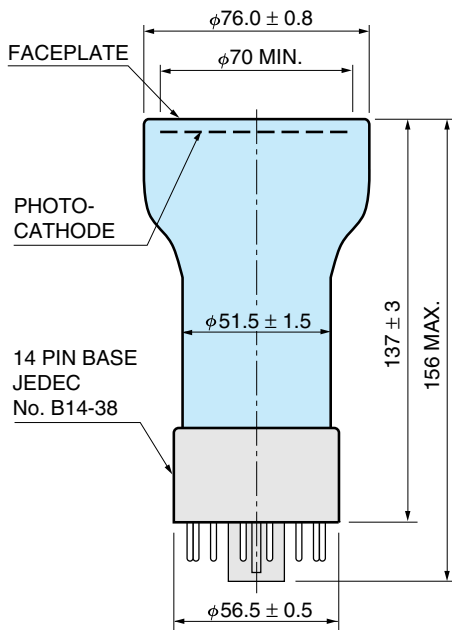
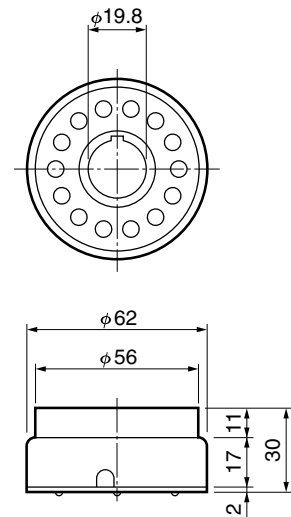


Figure 3: Dimensional outline and basing diagram (Unit: mm)



Socket E678-14W (Sold separately)



* Pins are housed in the socket.

TPMHA0657EB

TACCA0200EA

HAMAMATSU PHOTONICS K.K. www.hamamatsu.com

HAMAMATSU PHOTONICS K.K., Electron Tube Division

314-5, Shimokanzo, Iwata City, Shizuoka Pref., 438-0193, Japan, Telephone: (81)539/62-5248, Fax: (81)539/62-2205

U.S.A.: Hamamatsu Corporation: 360 Foothill Road, Bridgewater, N.J. 08807-0910, U.S.A., Telephone: (1)908-231-0960, Fax: (1)908-231-1218 E-mail: usa@hamamatsu.com

Germany: Hamamatsu Photonics Deutschland GmbH: Arzbergerstr. 10, D-82211 Herrsching am Ammersee, Germany, Telephone: (49)8152-375-0, Fax: (49)8152-2658 E-mail: info@hamamatsu.de

France: Hamamatsu Photonics France S.A.R.L.: 19, Rue du Saule Trapu, Parc du Moulin de Massy, 91882 Massy Cedex, France, Telephone: (33)1 69 53 71 00, Fax: (33)1 69 53 71 10 E-mail: infos@hamamatsu.fr

United Kingdom: Hamamatsu Photonics UK Limited: 2 Howard Court, 10 Tewin Road, Welwyn Garden City, Hertfordshire AL7 1BW, United Kingdom, Telephone: (44)1707-294888, Fax: (44)1707-325777 E-mail: info@hamamatsu.co.uk

North Europe: Hamamatsu Photonics Norden AB: Torshamnsgatan 35 SE-164 40 Kista, Sweden, Telephone: (46)8-509-031-00, Fax: (46)8-509-031-01 E-mail: info@hamamatsu.se

Italy: Hamamatsu Photonics Italia S.r.l.: Strada della Moia, 1 int. 6, 20020 Arese (Milano), Italy, Telephone: (39)02-93581733, Fax: (39)02-93581741 E-mail: info@hamamatsu.it

China: Hamamatsu Photonics (China) Co., Ltd.: B1201 Jiaming Center, No.27 Dongsanhuan Beilu, Chaoyang District, Beijing 100020, China, Telephone: (86)10-6586-6006, Fax: (86)10-6586-2866 E-mail: hpc@hamamatsu.com.cn

Taiwan: Hamamatsu Photonics Taiwan Co., Ltd.: 8F-3, No.158, Section2, Gongdao 5th Road, East District, Hsinchu, 300, Taiwan R.O.C. Telephone: (886)03-659-0080, Fax: (886)07-811-7238 E-mail: info@tw.hpk.co.jp

TPMH1365E01
APR. 2017 IP