

NEW

RUO model

NanoZoomer[®] S20

Digital slide scanner

C16300-01

Benchtop whole slide image scanner



High-speed Scanning

Approx. 30 s
(20×/40× mode)

* When it scans an area of 15 mm × 15 mm square with 5 focus points.

Compact

Benchtop compact scanner

Selectable Scanning Modes

Fully and Semi Automatic scanning available

Quality Check

Ensuring high image quality from each scan

Rapid Throughput

20 slides approx. 15 min
(20×/40× mode)

* When it scans an area of 15 mm × 15 mm square with 5 focus points.

Flexible Slide Racks

Sakura 4768 20-slide basket
Hamamatsu Slide cassette

High Quality Images

Ensuring consistent image quality across platforms

Compact, high-speed and adaptable scanner

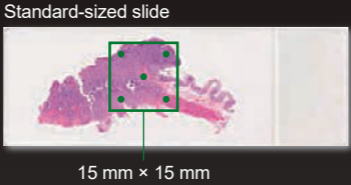
High-speed Scanning

Approx. **30** seconds

(40x/20x mode)

NanoZoomer® S20's scanning speed is as fast as our flagship S360.

* When it scans an area of 15 mm × 15 mm square with 5 focus points.



Rapid Throughput

New slide handling mechanics allows for rapid handling of slides.

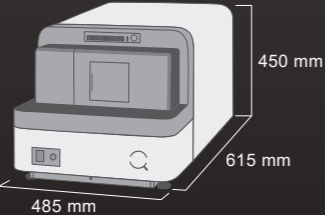
20 slides in **15** minutes

* When it scans an area of 15 mm × 15 mm square with 5 focus points.



Scalable Benchtop Compact Scanner

Our compact scanner fits on a lab bench and is a scalable solution, as you can add more scanners as digitization needs increase.



* Tolerance of ±10 mm.

Flexible Slide Rack

Load directly from Sakura 4768 20-slide basket* and cover slipper for efficient scanner workflow.

* Sakura 4768 20-slide basket is an option.

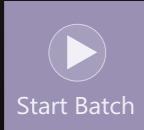


High Quality Images

NanoZoomer® produces high quality images using 40x and 20x modes, ensuring consistent image quality across platforms.

Selectable Scanning Modes

Fully Automatic scanning



All scanning processes work automatically. As soon as you load, the scanning begins.

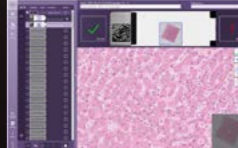
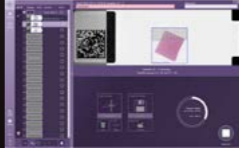
Semi Automatic scanning



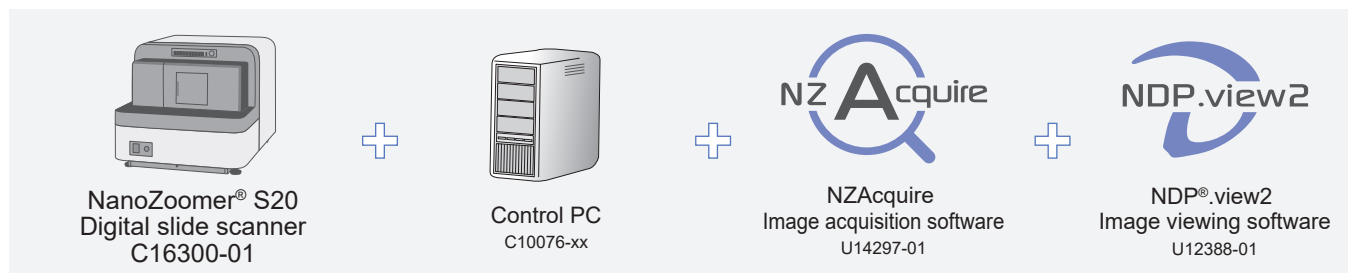
Option to set-up scanning conditions such as the scan area or resolution and to assign profiles for each slide.

Quality Check

QC (Quality Check) mode allows users to check for image quality before finalizing Whole Slide Imaging.



System configuration



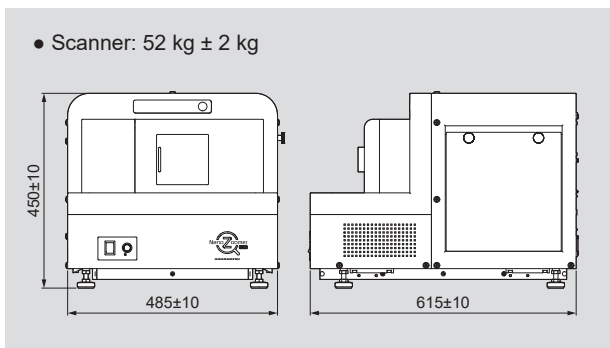
Accessory



- Slide cassette for S20 A16696-01

One cassette is included as standard. Additional cassettes can be purchased as an option.

Dimensional outlines (Unit: mm)



Specifications

Product name	NanoZoomer® S20 Digital slide scanner	
Product number	C16300-01	
Scanning speed* (20× mode / 40× mode)	Approx. 30 s	
Objective lens	20× N.A. 0.75 User can select 20× or 40× mode at start of scanning	
Compatible glass slides	25.0 mm to 26.0 mm × 75.0 mm to 76.0 mm (Thickness 0.9 mm to 1.2 mm)	
Slide loader	Up to 20 slides	
Scanning resolution	20× mode	Approx. 0.46 μm/pixel
	40× mode	Approx. 0.23 μm/pixel
Focusing method	Pre-Focus map	
Z-stack feature	Included	
Image compression	JPEG compression	
Readable barcodes	1D Barcodes	Code 39, Code 128, Interleaved 2 of 5, Codabar, EAN-8 and UPC-E
	2D Barcodes	DataMatrix (ECC200) QR code (QR Code Model-2)
Power supply	AC 100 V to AC 240 V	
Power consumption (Scanner only)	Approx. 150 VA	

* When it scans an area of 15 mm × 15 mm square with 5 focus points.

Option



- Adapter on SAKURA basket for S20 A16696-02

- NanoZoomer and NDP are registered trademarks of Hamamatsu Photonics K.K. (EU, Japan, UK, USA)
 - The product and software package names noted in this brochure are trademarks or registered trademarks of their respective manufacturers.
 - Subject to local technical requirements and regulations, availability of products included in this brochure may vary. Please consult your local sales representative.
 - The product described in this brochure is designed to meet the written specifications, when used strictly in accordance with all instructions.
 - This product is not a medical device.
 - Specifications and external appearance are subject to change without notice.
- © 2023 Hamamatsu Photonics K.K.

HAMAMATSU PHOTONICS K.K. www.hamamatsu.com

Systems Division

812 Joko-cho, Higashi-ku, Hamamatsu City, 431-3196, Japan, Telephone: (81)53-431-0124, Fax: (81)53-433-8031, E-mail: export@sys.hpk.co.jp

U.S.A.: HAMAMATSU CORPORATION: 360 Foothill Road, Bridgewater, NJ 08807, U.S.A., Telephone: (1)908-231-0960, Fax: (1)908-231-1218

Germany: HAMAMATSU PHOTONICS DEUTSCHLAND GMBH: Arzbergerstr. 10, 82211 Herrsching am Ammersee, Germany, Telephone: (49)8152-375-0, Fax: (49)8152-265-8 E-mail: info@hamamatsu.de

France: HAMAMATSU PHOTONICS FRANCE S.A.R.L.: 19 Rue du Saule Trapu, Parc du Moulin de Massy, 91882 Massy Cedex, France, Telephone: (33)1 69 53 71 00, Fax: (33)1 69 53 71 10 E-mail: infos@hamamatsu.fr

United Kingdom: HAMAMATSU PHOTONICS UK LIMITED: 2 Howard Court, 10 Tewin Road, Welwyn Garden City, Hertfordshire, AL7 1BW, UK, Telephone: (44)1707-294888, Fax: (44)1707-325777 E-mail: info@hamamatsu.co.uk

North Europe: HAMAMATSU PHOTONICS NORDEN AB: Torshamnsgatan 35 16440 Kista, Sweden, Telephone: (46)8-509 031 00, Fax: (46)8-509 031 01 E-mail: info@hamamatsu.se

Italy: HAMAMATSU PHOTONICS ITALIA S.R.L.: Strada della Moia, 1 int. 6, 20044 Arese (Milano), Italy, Telephone: (39)02-93 58 17 33, Fax: (39)02-93 58 17 41 E-mail: info@hamamatsu.it

China: HAMAMATSU PHOTONICS (CHINA) CO., LTD.: 1201 Tower B, Jianning Center, 27 Dongsanhuan Beilu, Chaoyang District, 100020 Beijing, P.R. China, Telephone: (86)10-6586-6006, Fax: (86)10-6586-2866 E-mail: hpc@hamamatsu.com.cn

Taiwan: HAMAMATSU PHOTONICS TAIWAN CO., LTD.: 8F-3, No.158, Section 2, Gongdao 5th Road, East District, Hsinchu, 300, Taiwan R.O.C., Telephone: (886)3-659-0080, Fax: (886)3-659-0081 E-mail: info@hamamatsu.com.tw