

Jun. 2024

HAMAMATSU
PHOTON IS OUR BUSINESS

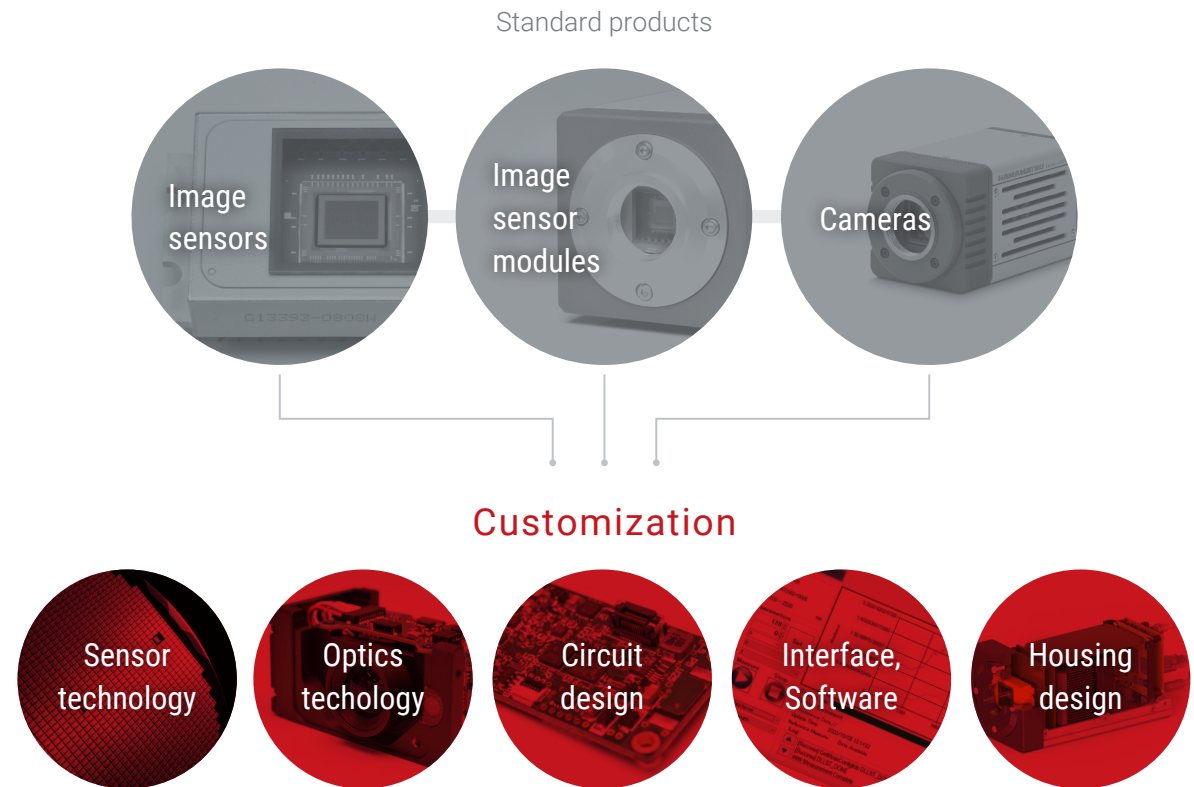
Custom Solutions of Image Sensors / Modules / Cameras

Suggesting Custom Solutions According to Customer Requirements



Overview

Hamamatsu offers standard products of image sensors, image sensor modules and cameras. In addition to the standard products, we design and manufacture custom products to meet customers' specifications in a wide range with various technologies.



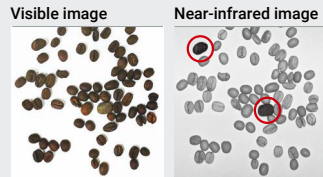
Applications

Hamamatsu image sensors, modules and cameras are widely used for applications such as industry, life science / medical and UAV / Monitoring system.

Industry

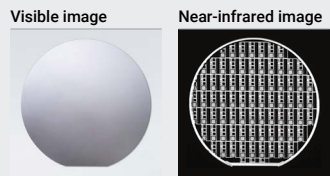
Food / beverage inspection

Small stones mixed in coffee beans are detected.



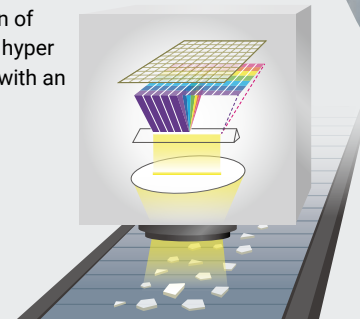
Semiconductor inspection

The pattern formed on the backside of the Si wafer is observed.



Recycle, Raw material inspection

Highly accurate identification of plastic is realized by using a hyper spectrum camera equipped with an InGaAs image sensor.



Plastic sorting using hyper spectral imaging.

Surface inspection

In-line inspection detects holes and scratches on the surface of the fabric.

UAV / Monitoring system

UAV (Unmanned aerial vehicle)

They are applied for UAV remote sensing for agriculture, forest management, infrastructure inspection.

Monitoring system

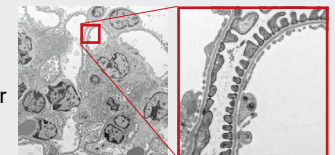
They are used for monitoring system of obstacles and shape recognition for safety and security.

Applications

Life science / Medical

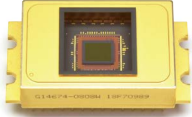


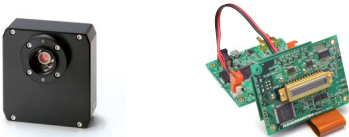
Cell observation by electron microscope / Pathological diagnosis

Micron-sized mouse kidney cells are observed under an electron microscope.



Differences of Image Sensors / Modules / Cameras

Following table shows differences of Hamamatsu standard image sensors, image sensor modules and cameras from the view point of the hardware and software.

		Image sensors	Image sensor modules	Cameras
				
Hardware	Image sensor	✓	✓	✓
	Driver circuit		✓	✓
	Interface		✓	✓
	Lens mount		✓	✓
	Housing	✓ *1	✓	✓ *2
	Cooling	✓ *2	✓ *2	✓ *2
	CE marking		✓	✓ *2
	Calibration function			✓
Software	DCAM-API®		✓ (C15853/C16090/C16091 series)	✓ *3
	DCAM-SDK		✓ (C15853/C16090/C16091 series)	✓ *3
	HCIImage		✓ (C15853/C16090/C16091 series)	✓ *3
Note	<p>Driver circuits (sold separately) are also available to easily evaluate and test Hamamatsu image sensors. It is also available for our original evaluation software (image acquisition only).</p> 			

*1: Including some products

*2: Excluding some products

*3: Including customer support

Standard Products

These are examples of modules and cameras which incorporate a Hamamatsu image sensor.

			Image sensors	Image sensor modules	Cameras	
Area	InGaAs (QVGA)	950 nm to 1700 nm*1	G13393-0808W 		C14041-10U 	
		950 nm to 1690 nm*2	G14671-0808W*4		C16090-01	
		1120 nm to 1850 nm*3	G14672-0808W*4		C16090-02	
		1300 nm to 2150 nm*3	G14673-0808W*4		C16090-03	
		1700 nm to 2550 nm*3	G14674-0808W*4		C16090-04	
Area	InGaAs (VGA)	950 nm to 1700 nm*1	G13393-0909W 		C12741-03 	
					C12741-11 	
Linear	InGaAs (high-speed)	950 nm to 1700 nm*1	G14714-1024DK*5 		C15853-02*5 	C15333-10E04 
	InGaAs	900 nm to 1850 nm*2	G11475 series*6 		C16091-01/-02*6 	
		900 nm to 2550 nm*2	G11478 series*6		C16091-06/-07*6	
	CMOS	400 nm to 1000 nm (RGB + NIR readout)	(Under development)		C16006	
Linear	CCD (TDI)	200 nm to 1100 nm*1	S10201-04-01 		C10000-801 	
					C10000-A01 	

*1: Ta=25 °C *2: Ta=15 °C *3: Ta=-20 °C

*4: Improved types G16561 to G16564-0808T are also available (image sensor module is being prepared).

*5: Image sensor module C15853-01 integrating the InGaAs linear image sensor G14714-512DE is also available.

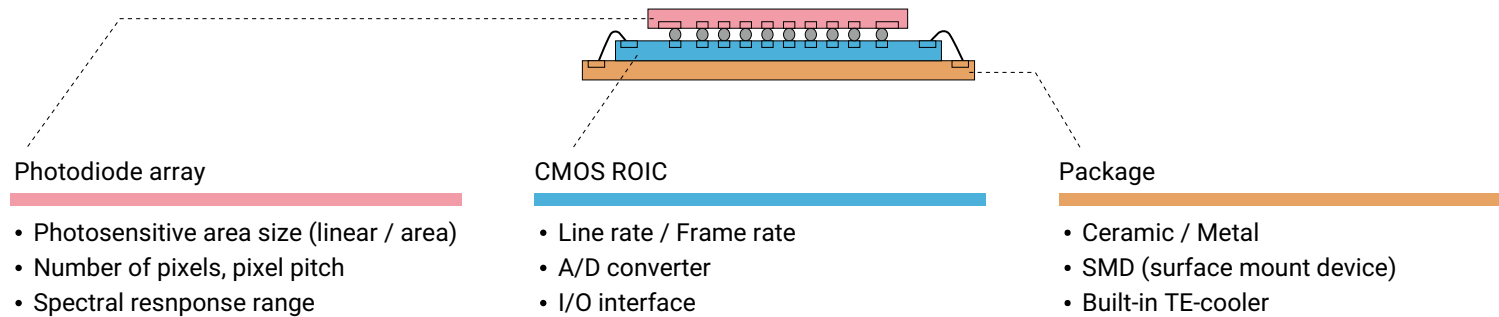
*6: InGaAs linear image sensors G11475 to G11478 series and image sensor modules C16091-01 to -07 having various types of spectral response range from 900 nm to 2550 nm are prepared.

For details, please refer to the datasheet.

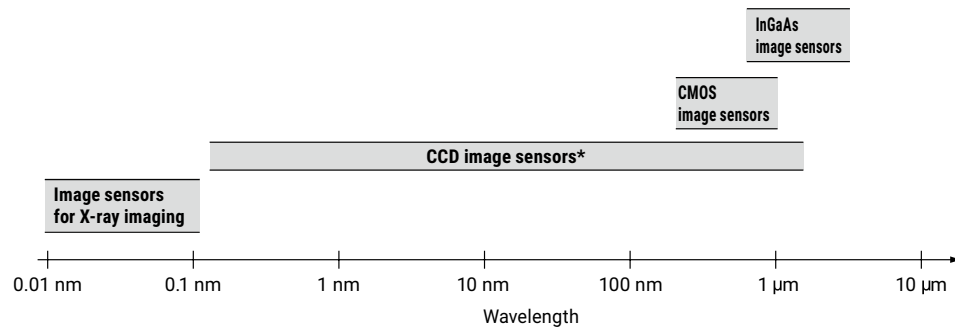
Image Sensor Customization

Hamamatsu offers the sensor chip customization in addition to hundreds of standard image sensor products. Sensors and wafers are built from the ground up in our foundry in Hamamatsu, Japan. We have full control over the sensor design, wafer fabrication process, chip assembly, and packaging. Hamamatsu can provide the customization in many aspects including the photosensitive area pixel format, spectral response, readout ASIC, and packaging.

Customizable specifications (InGaAs image sensors)



Detectable spectral response range



* Including windowless type

Package types

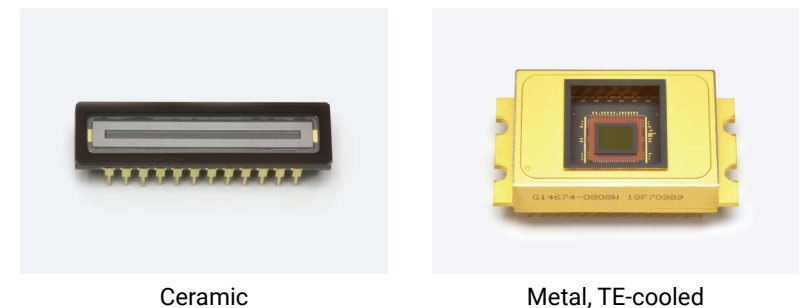
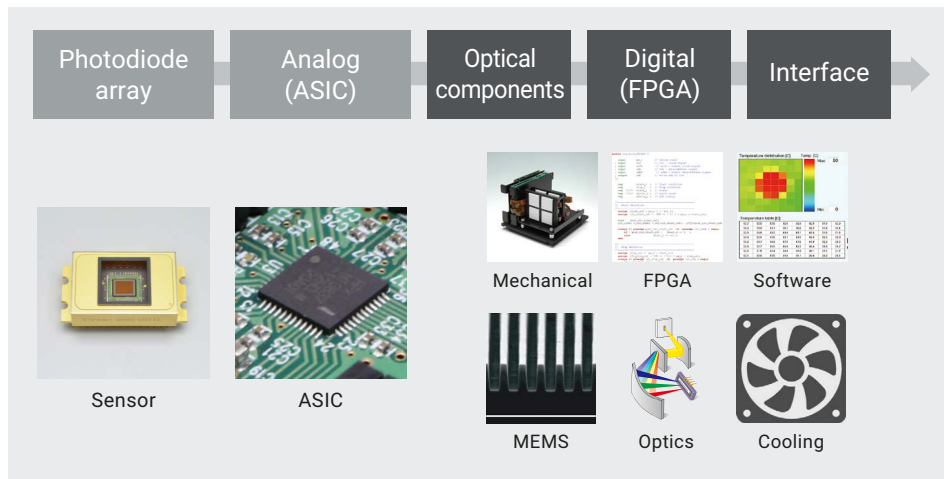


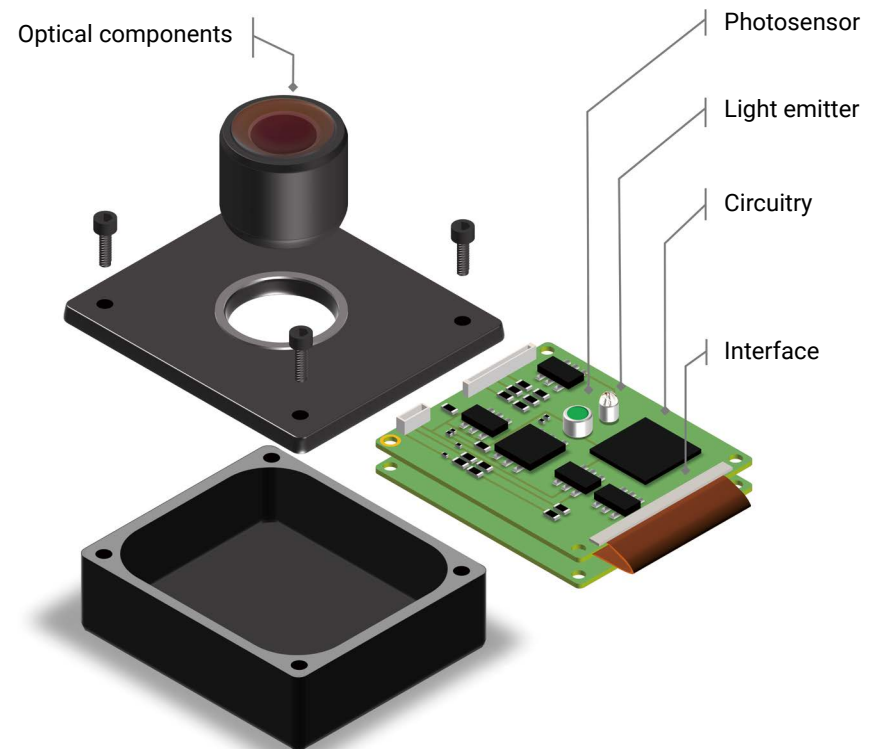
Image Sensor Module / Camera Customization

Hamamatsu not only offers the sensor components but also offers the module solutions featuring our image sensor and other opto-semiconductor products. Customized modules can be designed, simulated, and assembled to customers' specifications by utilizing Hamamatsu's expertise in ASIC design, as well as in opto-mechanics, digital and software design.

Hamamatsu technologies for modularization



Configuration example

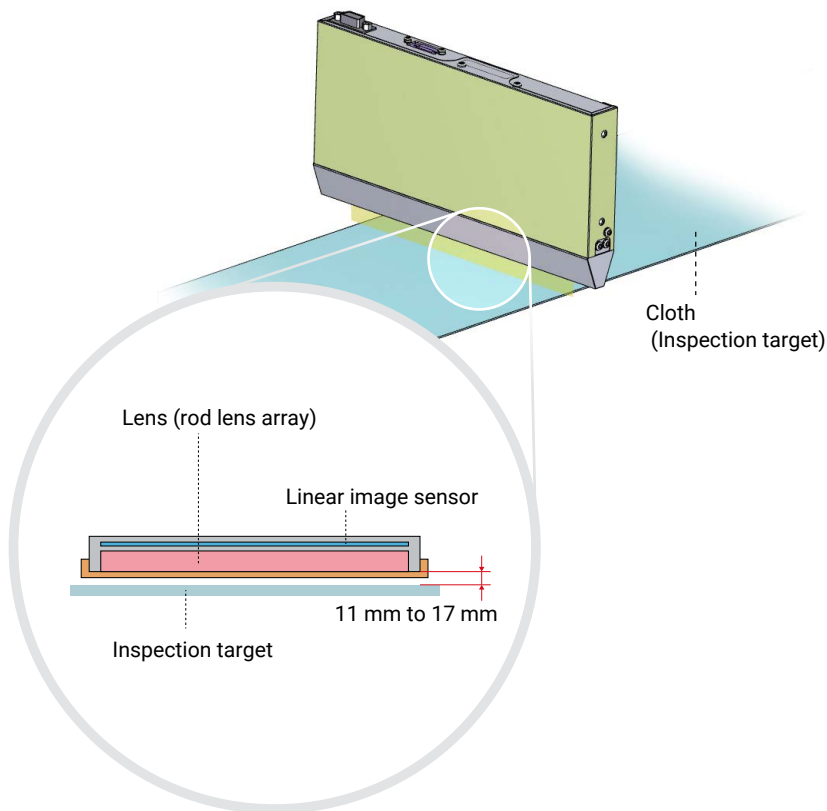


Solution Example

Contact line camera

This is an example of a customized contact line camera that supports in-line inspection of apparel fabrics for defects, appearance, etc. Its compact housing that integrates lenses and a linear image sensor allows for a short operating distance from inspection targets, which enables a single camera to cover a large scan width without causing distortion in acquired images.

System configuration

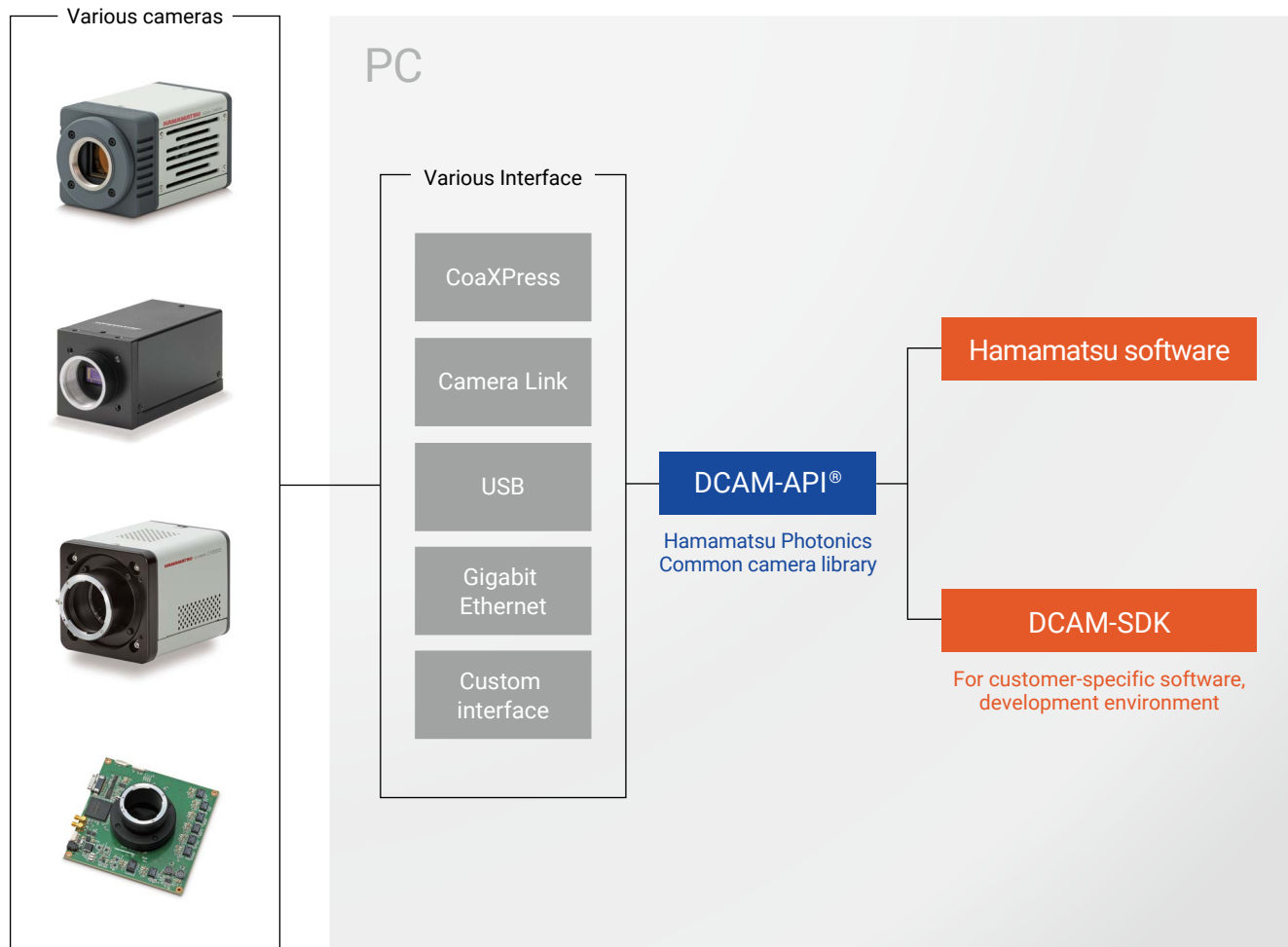


Comparison with reduced optical camera

Parameter	Contact line camera	Reduced optical camera
Image of usage		
Distance to the inspection target	Close	Far
Scan width	Wide	Narrow
Resolution	Low	High
Required radiant intensity	Low	High
Scan speed	Fast	Slow
Image distortion	None	Occurs at the edge of the image

DCAM-API® / DCAM-SDK Support

We provide a common camera library “DCAM-API®,” Hamamatsu Photonics software that can maximize the characteristics of your camera, and a tool “DCAM-SDK,” that allows you to build your own control software. Through DCAM-API®, even if the camera or interface is changed, the software modification / change can be minimized.



Main Products

Opto-semiconductors

- Si photodiodes
- APD
- MPPC®
- Photo IC
- Image sensors
- PSD
- Infrared detectors
- LED
- Optical communication devices
- Automotive devices
- X-ray flat panel sensors
- MEMS devices
- Mini-spectrometers
- Opto-semiconductor modules

Electron Tubes

- Photomultiplier tubes
- Photomultiplier tube modules
- Microchannel plates
- Image intensifiers
- Xenon lamps / Mercury-xenon lamps
- Deuterium lamps
- Light source applied products
- Microfocus X-ray sources
- X-ray imaging devices

Imaging and Processing Systems

- Scientific cameras
- Spectroscopic and optical measurement systems
- Ultrafast photometry systems
- Life science systems
- Medical systems
- Non-destructive inspection products
- Semiconductor manufacturing support systems
- Material research systems

Laser Products

- Single chip laser diodes
- Laser diode bar modules
- Quantum cascade lasers
- Applied products of semiconductor lasers
- Solid state lasers / Fiber lasers
- Laser related products

• DCAM-API (EU, Japan, U.K., U.S.A.) / MPPC (EU, Japan, Switzerland, U.S.A) are registered trademark of Hamamatsu Photonics K.K.

• Information in this catalog is believed to be reliable. However, no responsibility is assumed for possible inaccuracies or omission. Specifications are subject to change without notice. No patent rights are granted to any of the circuits described herein. © 2024 Hamamatsu Photonics K.K.

• Please thoroughly read the precautions and the prohibited uses included in the user manual before installation and use.

HAMAMATSU PHOTONICS K.K. www.hamamatsu.com

U.S.A. : HAMAMATSU CORPORATION: 360 Foothill Road, Bridgewater, NJ 08807, U.S.A., Telephone: (1)908-231-0960, Fax: (1)908-231-1218

Germany : HAMAMATSU PHOTONICS DEUTSCHLAND GMBH: Arzbergerstr. 10, 82211 Herrsching am Ammersee, Germany, Telephone: (49)8152-375-0, Fax: (49)8152-265-8 E-mail: info@hamamatsu.de

France : HAMAMATSU PHOTONICS FRANCE S.A.R.L.: 19 Rue du Saule Trapu, Parc du Moulin de Massy, 91882 Massy Cedex, France, Telephone: (33)1 69 53 71 00, Fax: (33)1 69 53 71 10 E-mail: infos@hamamatsu.fr

United Kingdom : HAMAMATSU PHOTONICS UK LIMITED: 2 Howard Court, 10 Tewin Road, Welwyn Garden City, Hertfordshire, AL7 1BW, UK, Telephone: (44)1707-294888, Fax: (44)1707-325777 E-mail: info@hamamatsu.co.uk

North Europe : HAMAMATSU PHOTONICS NORDEN AB: Torshamnsgatan 35, 16440 Kista, Sweden, Telephone: (46)8-509-031-00, Fax: (46)8-509-031-01 E-mail: info@hamamatsu.se

Italy : HAMAMATSU PHOTONICS ITALIA S.R.L.: Strada della Moia, 1 int. 6 20044 Arese (Milano), Italy, Telephone: (39)02-93 58 17 33, Fax: (39)02-93 58 17 41 E-mail: info@hamamatsu.it

China : HAMAMATSU PHOTONICS (CHINA) CO., LTD.: 1201, Tower B, Jianning Center, 27 Dongsanhuan Beilu, Chaoyang District, 100020 Beijing, P.R. China, Telephone: (86)10-6586-6006, Fax: (86)10-6586-2866 E-mail: hpc@hamamatsu.com.cn

Taiwan : HAMAMATSU PHOTONICS TAIWAN CO., LTD.: 13F-1, No.101, Section 2, Gongdao 5th Road, East Dist., Hsinchu City 3000406, Taiwan (R.O.C.) Telephone: (886)3-659-0080, Fax: (886)3-659-0081 E-mail: info@hamamatsu.com.tw