

CAMERA LINE UP CATALOG



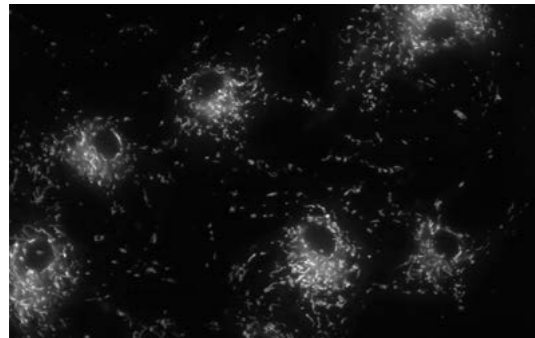
APPLICATION

We have a diverse lineup of cameras that support a wide range of wavelengths from X-rays to the near-infrared and support a variety of applications.

Life science

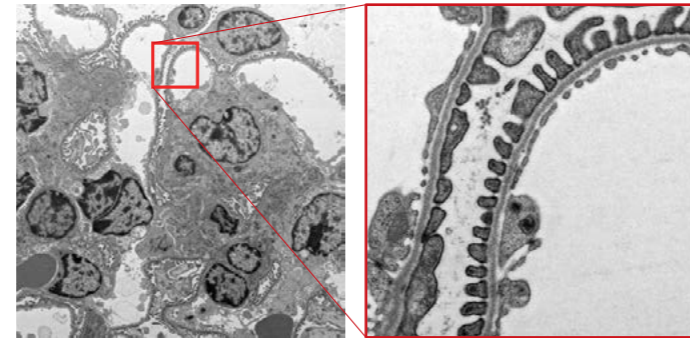
Time-lapse imaging of live cells

Mitochondria in living cells are observed by long-time time-lapse imaging.



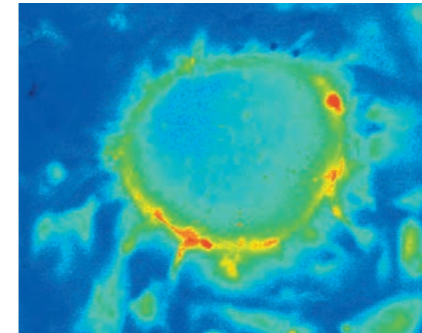
Observation of mouse kidney cells

Micron-sized mouse kidney cells are observed by high-resolution imaging under an electron microscope.



Cardiomyocyte pulsation observation

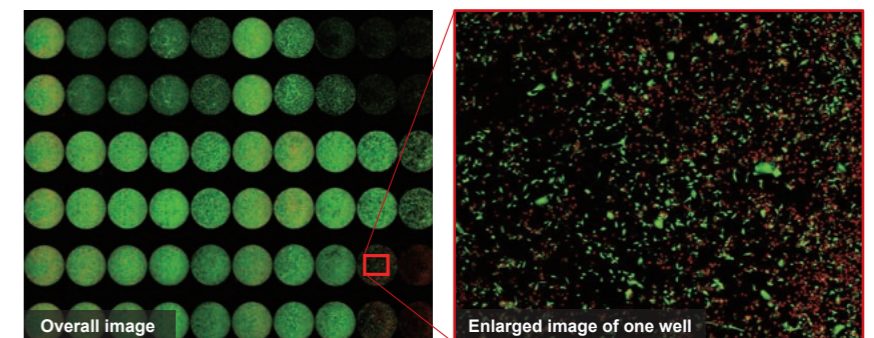
The pulsation of cardiomyocytes associated with changes in calcium ion concentration is observed by high-speed imaging using fluorescence images.



* Displayed with pseudo color by image processing.

Observation of cultured cells

Cells cultured in one well of a microplate are observed by high-resolution imaging with fluorescent images.

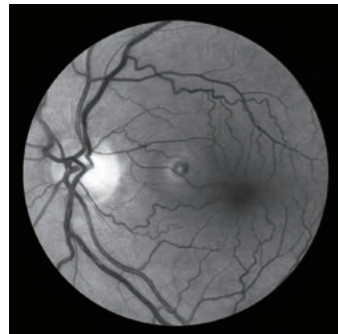


* Displayed with pseudo color by image processing.

Medical

Medical diagnosis

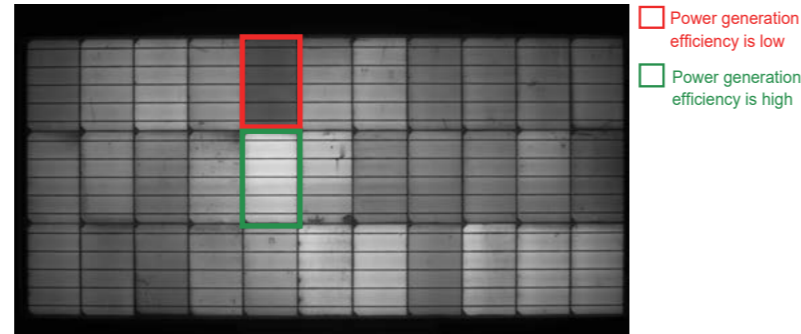
The condition of the affected area is observed for diagnosis by infrared imaging.



Semiconductor inspection

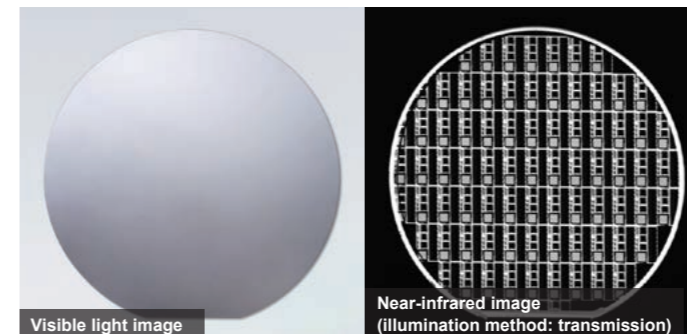
Inspection of power generation efficiency of solar panel

The power generation efficiency of a solar cell panel (1 m × 0.5 m) is observed by wide-field infrared imaging with an EL image.



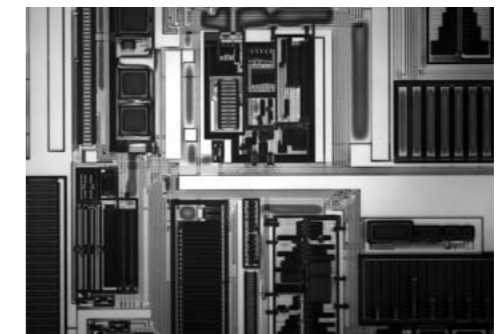
Transmission observation of Si wafer

The pattern formed on the backside of the Si wafer is observed transmittedly through the front side by infrared imaging.



Semiconductor device observation

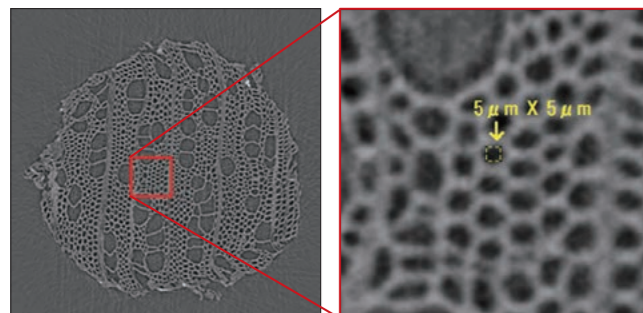
The pattern under the Si layer is observed by infrared imaging.



Synchrotron imaging

X-ray CT

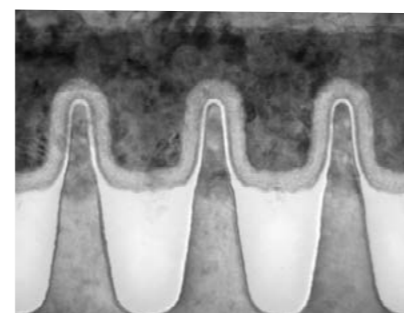
The cross-sectional structure of the toothpick is clearly shown by high-resolution X-ray imaging.



Electronic microscope

Structure observation of semiconductor devices

The interior structure of a semiconductor device is analyzed at the nano-level by high-resolution imaging using an electron microscope.

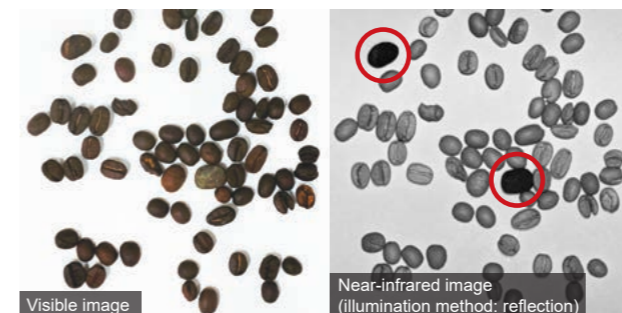


20 nm

Food inspection

Foreign object detection

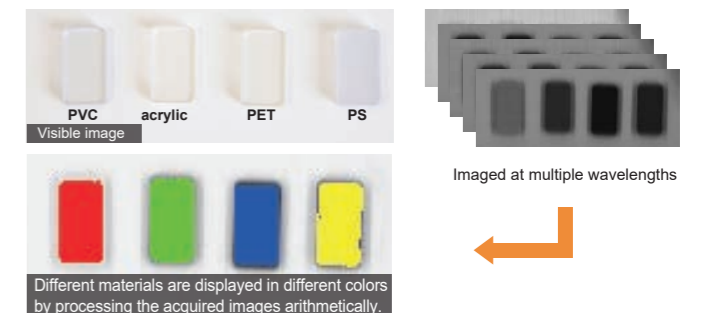
Small stones mixed in coffee beans that are difficult to see with visible light are detected by the infrared imaging.



Analysis/spectroscopy















Material identification

Infrared imaging identifies materials that are difficult to distinguish in visible light, such as PVC, acrylic, PET, and PS.









* Displayed with pseudo color by image processing.


CAMERA LINE UP

Wavelength range	UV to near-infrared	Visible to near-infrared							Visible to near-infrared (for weak light)	Near-infrared					
Name	ORCA-II Digital CCD camera	ORCA-Fusion BT Digital CMOS camera	ORCA-Fusion Digital CMOS camera	ORCA-Flash4.0 V3 Digital CMOS camera	ORCA-Lightning Digital CMOS camera	ORCA-Flash4.0 LT+ Digital CMOS camera	ORCA-spark Digital CMOS camera	TDI camera	ImagEM® X2 EM-CCD camera	ImagEM X2-1k EM-CCD camera	InGaAs camera		InGaAs line scan Camera		
Type	C11090-22B	C15440-20UP	C14440-20UP	C13440-20CU	C14120-20P	C11440-42U30	C11440-36U	C10000-801	C9100-23B	C9100-24B	C14041-10U	C12741-03	C12741-11	C15333-10E	
Appearance															
Image sensor type	Area sensor	Area sensor							TDI sensor	Area sensor		Area sensor		Line sensor	
Sensitivity wavelength range (nm) (Spectral response: See P5)	200 to 1000	350 to 1000							200 to 1000	300 to 1100		950 to 1700		900 to 1550	950 to 1700
Effective number of pixels (H × V)	1024 × 1024	2304 × 2304	2304 × 2304	2048 × 2048	4608 × 2592	2048 × 2048	1920 × 1200	2048 × 128	512 × 512	1024 × 1024	320 × 256	640 × 512	640 × 512	1024 × 1	
Pixel size ((H) μm × (V) μm)	13 × 13	6.5 × 6.5	6.5 × 6.5	6.5 × 6.5	5.5 × 5.5	6.5 × 6.5	5.86 × 5.86	12 × 12	16 × 16	13 × 13	20 × 20		12.5 × 12.5		
Effective area ((H) mm × (V) mm)	13.3 × 13.3	14.976 × 14.976	14.976 × 14.976	13.312 × 13.312	25.344 × 14.256	13.312 × 13.312	11.25 × 7.03	24.58 × 1.536	8.19 × 8.19	13.3 × 13.3	6.4 × 5.12	12.8 × 10.24	12.8 × 10.24	12.8 × 0.0125	
Full well capacity (electrons) typ.*	80 000	15 000	15 000	30 000	38 000	30 000	33 000	80 000	370 000	400 000	-	-	300 000	-	
Dynamic range typ.*	13 333:1	21 400:1	21 400:1	37 000:1	17 000:1	33 000:1	5000:1	1600:1	-	-	-	-	-	-	
Cooling method	Forced-air cooled/ Water cooled	Forced-air cooled/ Water cooled	Forced-air cooled/ Water cooled	Forced-air cooled/ Water cooled	Forced-air cooled/ Water cooled	Forces-air cooled	-	-	Forced-air cooled/ Water cooled	Forced-air cooled/ Water cooled	Forced-air cooled	Forced-air cooled	Forced-air cooled/ Water cooled	-	
Cooling temperature (°C)*	-75 (Water cooled)	-15 (Water cooled)	-15 (Water cooled)	-30 (Water cooled)	+20	+10	-	-	-100 (Water cooled)	-80 (Water cooled)	+10	+10	-70 (Water cooled)	-	
Readout speed (frame/s) (Full resolution)*	3.15	89.1	89.1	100	121	30	64.9	50 kHz (Line rate)	70.4	18.5	216.6	59.774	7.2	40 kHz (Line rate)	
Readout noise (electrons) rms typ.*	6	0.7	0.7	1.4	2	1.5	6.6	50	1 max.	1 max.	-	-	-	-	
Dark current (electrons/pixel/s) typ.*	0.0012 (Water cooled)	0.7 (Water cooled)	0.2 (Water cooled)	0.006 (Water cooled)	15	0.6	-	-	0.0005 (Water cooled)	0.001 (Water cooled)	-	-	130 (Water cooled)	-	
Interface	IEEE 1394b	CoaXPress (Dual CXP-6)/ USB 3.0	CoaXPress (Dual CXP-6)/ USB 3.0	Camera Link/USB 3.0	CoaXPress (Quad CXP-6)	USB 3.0	USB 3.0	Camera Link	IEEE 1394b	IEEE 1394b	USB 3.0	USB 3.0/EIA	Camera Link	Gigabit Ethernet	
Applications	Analysis/spectroscopy Synchrotron imaging	Life science imaging Synchrotron imaging Electronic microscope	Life science imaging Semiconductor inspection Synchrotron imaging Electronic microscope	Life science imaging Semiconductor inspection Synchrotron imaging Electronic microscope	Life science imaging Synchrotron imaging	Life science imaging Semiconductor inspection	Life science imaging Synchrotron imaging	Life science imaging Semiconductor inspection	Life science imaging Synchrotron imaging	Life science imaging Synchrotron imaging	Semiconductor inspection Food inspection	Semiconductor inspection Analysis/spectroscopy	Life science imaging	Semiconductor inspection Food inspection	

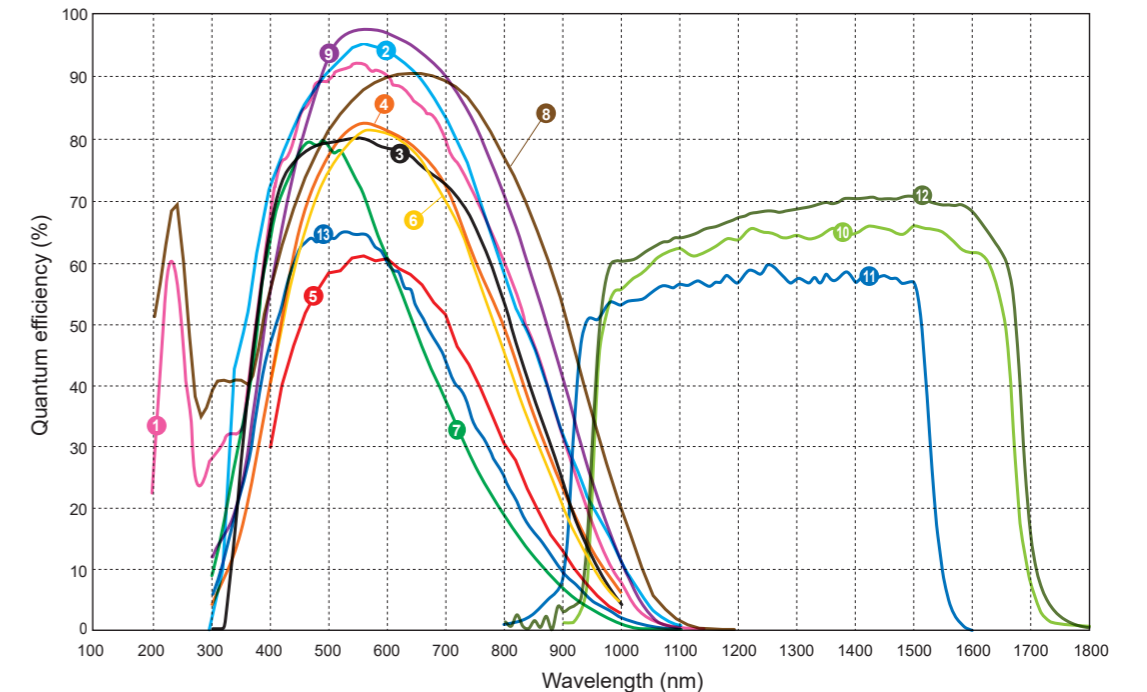
* Depends on the mode and conditions. For details, refer to each product catalog.

Camera type	Board type camera for OEM					
Name	Scientific CMOS board level camera		Digital CMOS board level camera			TDI board level camera
Type	C11440-62U	C11440-52U30	C13949-50U	C13770-50U	C13752-50U	C10000-A01
Appearance						
Image sensor type	Area sensor		Area sensor			TDI sensor
Sensitivity wavelength range (nm) (Spectral response: See P5)	350 to 1000		350 to 1000			200 to 1000
Effective number of pixels (H × V)	2048 × 2048		4096 × 3008	2464 × 2056	2048 × 1544	2048 × 128
Pixel size ((H) μm × (V) μm)	6.5 × 6.5		3.45 × 3.45			12 × 12
Effective area ((H) mm × (V) mm)	13.312 × 13.312		14.13 × 10.37	8.50 × 7.09	7.06 × 5.32	24.53 × 1.536
Full well capacity (electrons) typ.*	30 000		10 500			80 000
Dynamic range typ.*	20 000:1	18 000:1	4565:1			1600:1
Readout speed (frame/s) (Full resolution)*	30		15	40	65	50 kHz (Line rate)
Readout noise (electrons) rms typ.*	2.1	2.3	2.3			50
Interface	USB 3.0		USB 3.0			Camera Link
Applications	Contact us	Contact us	Contact us	Contact us	Contact us	Life science imaging Semiconductor inspection

* Depends on the mode and conditions. For details, refer to each product catalog.

For X-ray
X-ray sCMOS camera
C12849-111U

Area sensor
25 kV to 90 kV (Recommended X-ray tube voltage range)
2048 × 2048
6.5 × 6.5
13.312 × 13.312
30 000
18 000:1
30
2.3
USB 3.0
Synchrotron imaging

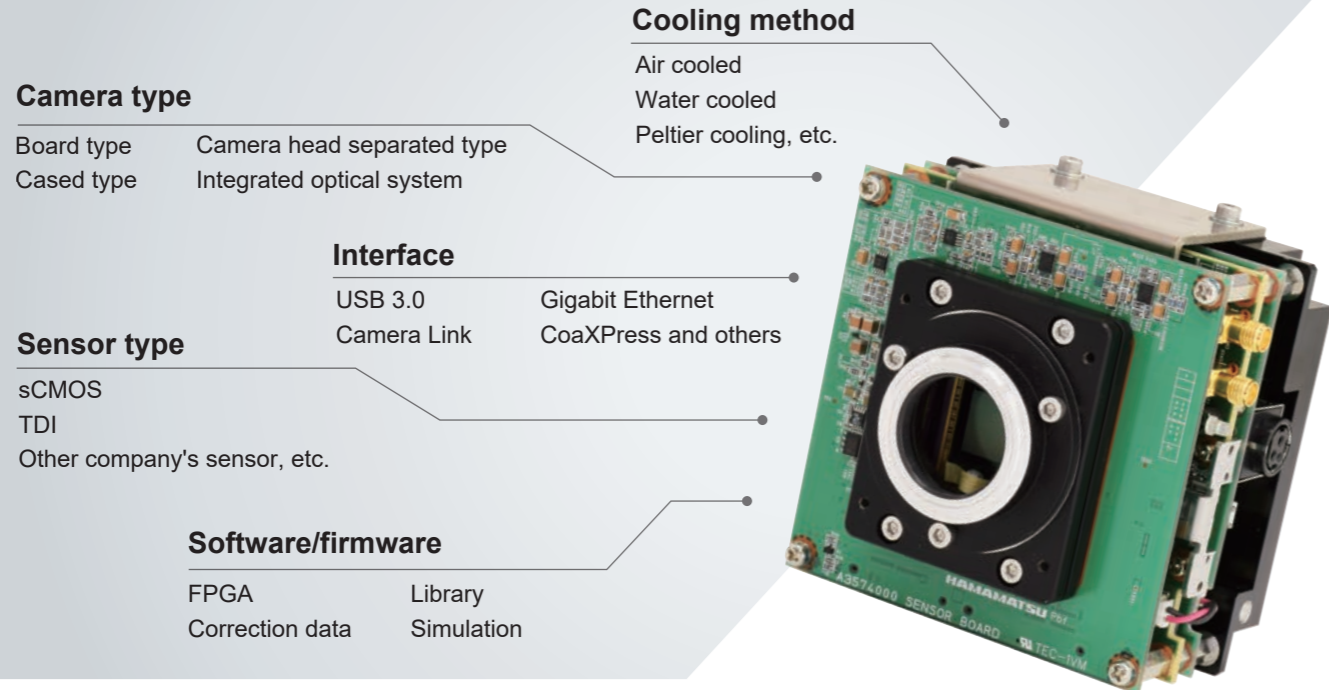
Spectral response



OEM CAMERA

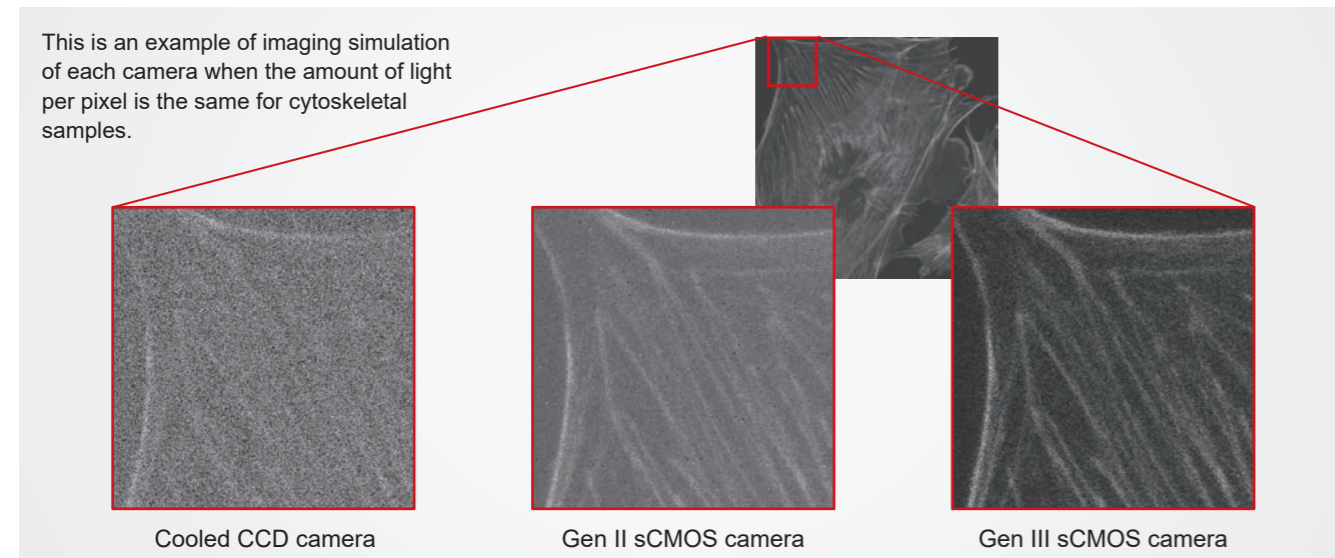
We design and manufacture OEM cameras specific to each customer. We provide various types of cameras with options such as shape, sensor, interface, cooling method, software, etc. to meet customers' requests. The measurement wavelength range covers not only the visible range but spans widely from X-ray to infrared.

Cost reduction with minimum required functions



Simulation technology for prompt realization of OEM

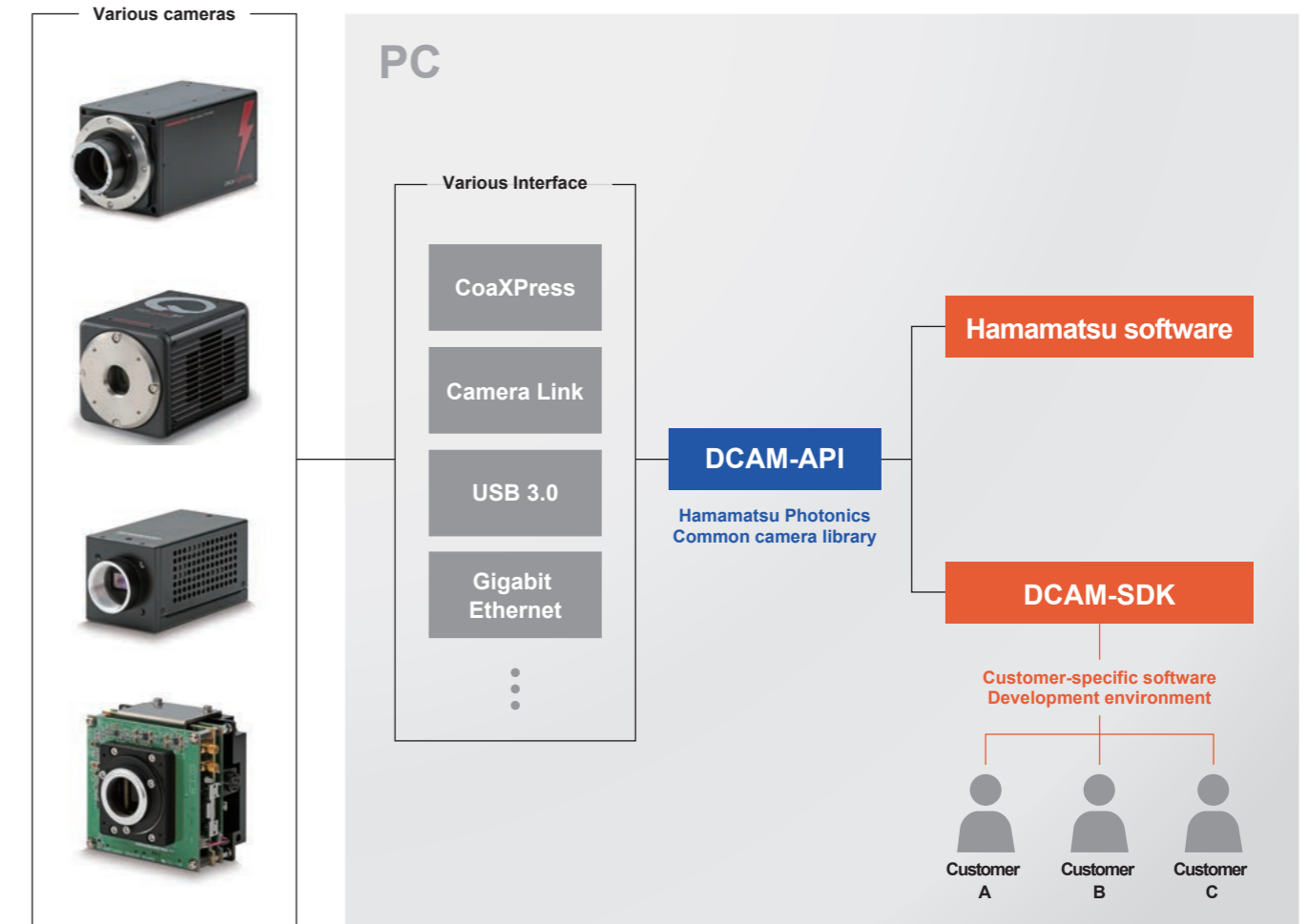
We can perform imaging simulations that match the characteristics (wavelength, sensitivity, speed, etc.) of various cameras. By using this technology, we shorten the process of repeating design and trial production and provide a camera that meets your purpose efficiently and in a short time



According to your request, we can simulate imaging by flexibly changing the acquisition conditions such as exposure time. The results can also be output as a video.

SOFTWARE

We provide a common camera library "DCAM-API," Hamamatsu Photonics software that can maximize the characteristics of your camera, and a tool "DCAM-SDK," that allows you to build your own control software. Through DCAM-API, even if the camera or interface is changed, the software modification/change can be minimized.



Compatible software/development environment

The followings are examples of the development environments and software that can be used with our cameras.

Development environment	Manufacturer	Features
LabVIEW (Windows)	National Instruments	Simple programming language, easy control of peripheral devices
MATLAB (Image acquisition toolbox)	The MathWorks	Simple programming language and a rich data analysis library
Micro-manager®	Open Imaging	A library that enables control of microscopes and peripheral devices of other companies
Software	Manufacturer	Features
MetaMorph® software suite of products	Molecular Devices	Image processing software for life science field

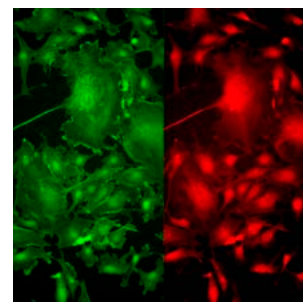
* For details on external software, contact the manufacturer.

RELATED PRODUCTS

Image splitting optics W-VIEW GEMINI/W-VIEW GEMINI-2C

W-VIEW GEMINI A12801-01 is an image splitting optical system for a fluorescence microscope that splits incident light into two wavelengths and forms an image on a single camera. You can easily adjust the optical axis and observe images of two wavelengths at the same time.

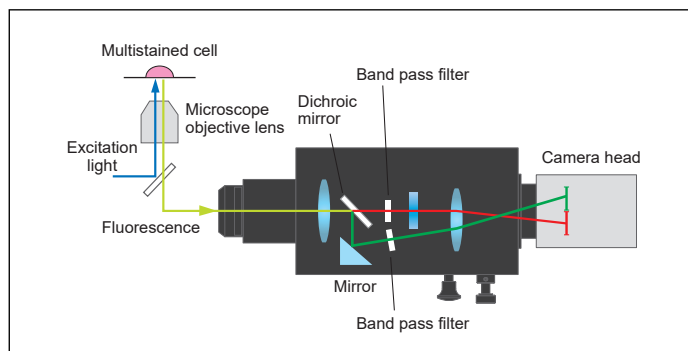
We also have a line-up of W-VIEW GEMINI-2C A12801-10, which forms images on two cameras.



A two wave lengths image by W-VIEW GEMINI



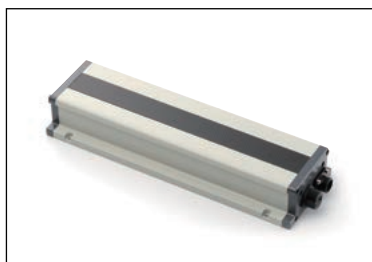
**W-VIEW GEMINI
A12801-01**



W-VIEW GEMINI principle diagram

X-ray line scan camera/X-ray TDI camera

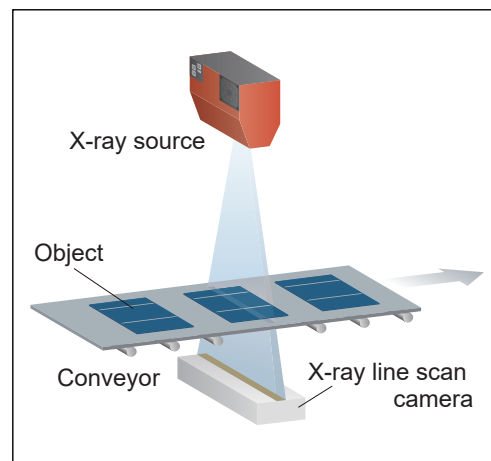
We have a lineup of X-ray non-destructive inspection cameras that can be used in-line. Since it is possible to inspect the inside of substances that cannot be seen with visible light or infrared light, these cameras are suitable for foreign matter inspection of foods and pharmaceuticals, defect inspection of printed circuit board, etc.



**X-ray line scan camera
C14300 series**



**X-ray TDI camera
C12300 series**



- ORCA is registered trademark of Hamamatsu Photonics K.K. (China, France, Germany, Japan, U.K., U.S.A.)
- Imagem is registered trademark of Hamamatsu Photonics K.K. (EU, Japan, U.S.A.)
- Windows is registered trademark of Microsoft Corporation in the U.S.A. Product and software package names noted in this documentation are trademarks or registered trademarks of their respective manufactures.
- Subject to local technical requirements and regulations, availability of products included in this promotional material may vary. Please consult your local sales representative.
- Information furnished by HAMAMATSU is believed to be reliable. However, no responsibility is assumed for possible inaccuracies or omissions. Specifications and external appearance are subject to change without notice.

© 2020 Hamamatsu Photonics K.K

HAMAMATSU PHOTONICS K.K. www.hamamatsu.com

Systems Division

812 Joko-cho, Higashi-ku, Hamamatsu City, 431-3196, Japan, Telephone: (81)53-431-0124, Fax: (81)53-433-8031, E-mail: export@sys.hpk.co.jp

U.S.A.: Hamamatsu Corporation: 360 Foothill Road, Bridgewater, NJ 08807, U.S.A., Telephone: (1)908-231-0960, Fax: (1)908-231-1218 E-mail: usa@hamamatsu.com

Germany: Hamamatsu Photonics Deutschland GmbH: Arzbergerstr. 10, D-82211 Herrsching am Ammersee, Germany, Telephone: (49)8152-375-0, Fax: (49)8152-265-8 E-mail: info@hamamatsu.de

France: Hamamatsu Photonics France S.A.R.L.: 19, Rue du Saule Trapu, Parc du Moulin de Massy, 91882 Massy Cedex, France, Telephone: (33)1 69 53 71 00, Fax: (33)1 69 53 71 10 E-mail: infos@hamamatsu.fr

United Kingdom: Hamamatsu Photonics UK Limited: 2 Howard Court, 10 Twin Road, Welwyn Garden City, Hertfordshire AL7 1BW, UK, Telephone: (44)1707-294888, Fax: (44)1707-325777 E-mail: info@hamamatsu.co.uk

North Europe: Hamamatsu Photonics Norden AB: Torshamnsgatan 35 16440 Kista, Sweden, Telephone: (46)8-509 031 00, Fax: (46)8-509 031 01 E-mail: info@hamamatsu.se

Italy: Hamamatsu Photonics Italia S.r.l.: Strada della Moia, 1 int. 6, 20020 Arese (Milano), Italy, Telephone: (39)02-93 58 17 33, Fax: (39)02-93 58 17 41 E-mail: info@hamamatsu.it

China: Hamamatsu Photonics (China) Co., Ltd.: 1201 Tower B, Jiaming Center, 27 Dongsanhuan Beilu, Chaoyang District, 100020 Beijing, P.R. China, Telephone: (86)10-6586-6006, Fax: (86)10-6586-2866 E-mail: hpc@hamamatsu.com.cn

Taiwan: Hamamatsu Photonics Taiwan Co., Ltd.: 8F-3, No.158, Section 2, Gongdao 5th Road, East District, Hsinchu, 300, Taiwan R.O.C. Telephone: (886)3-659-0080, Fax: (886)3-659-0081 E-mail: info@hamamatsu.com.tw

Cat. No. SCAS0142E01
AUG/2020 CR
Created in Japan